

L200 MONDOPAD GUIDE



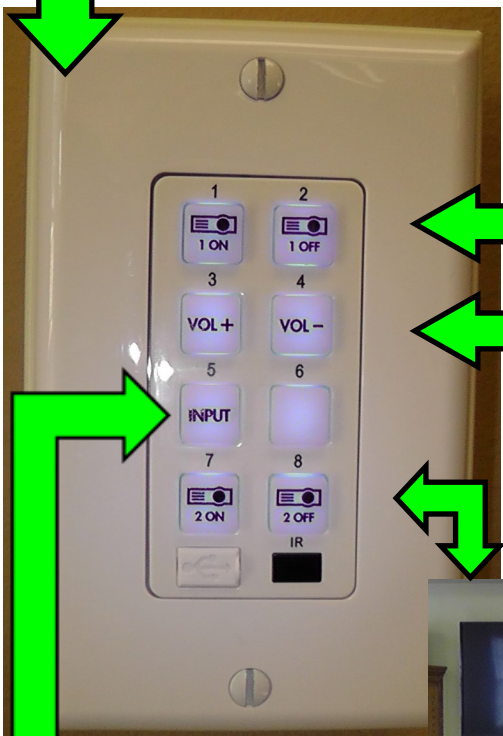
TURNING ON SYSTEM	2
SHARE MONDOPAD SCREEN WITH LAPTOP/MACBOOK/TABLET/iPAD	3
UPLOAD PRESENTATION FILE TO MONDOPAD	4 - 8
VIEW MONDOPAD ON DEVICE	9
CONTROL MONDOPAD FROM DEVICE	10 - 11
MONDOPAD WHITEBOARD	12 - 13

TO USE MONDOPAD



MONDOPAD

RIGHT DISPLAY



TURN MONDOPAD & RIGHT DISPLAY ON/OFF

MASTER VOLUME

TURN REAR (BACK OF ROOM) DISPLAYS ON/OFF



HDMI/VGA
INPUT SELECTION



VGA/HDMI
PORT LOCATED
UNDER MONDOPAD

SCREEN SHARE WITH LAPTOP/TABLET/IPAD

- AN ADAPTER MAY NEED TO BE USED BETWEEN THE DEVICE AND THE VGA CORD
- ONCE DEVICE IS CONNECTED PRESS THE CORRESPONDING SELECTION ON THE CONTROL PANEL TO SHARE SCREEN



CONNECT HDMI OR VGA CORD
TO CORRESPONDING PORT



THEN PRESS "INPUT" ON THE
CONTROL PANEL



HDMI CORD



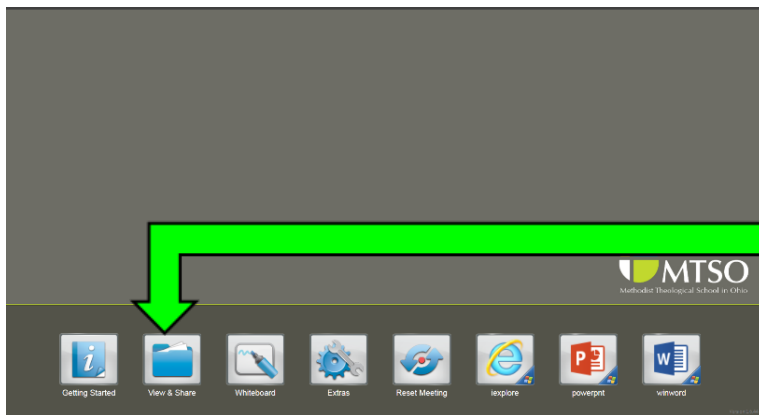
VGA CORD

USE YOUR OWN HDMI CORD
OR MAKE ARRANGEMENTS
WITH TECH SUPPORT
TO SUPPLY YOU WITH ONE
SUPPORT@MTSO.EDU

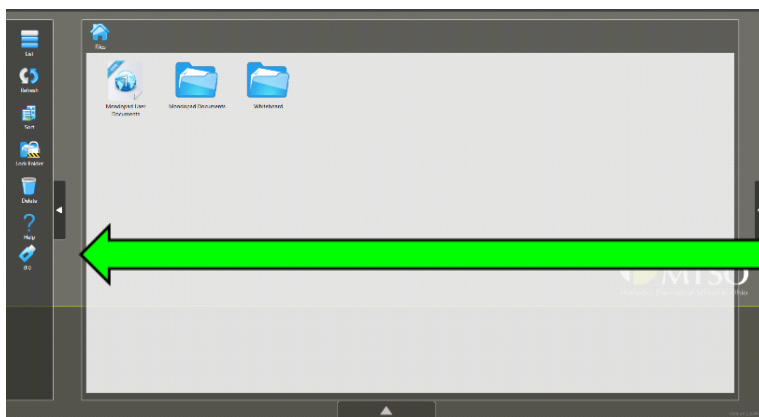
VIEW FILE FROM DISK (THUMBDRIVE)



- **ATTACH THUMBDRIVE ON THE RIGHT SIDE OF THE SCREEN**

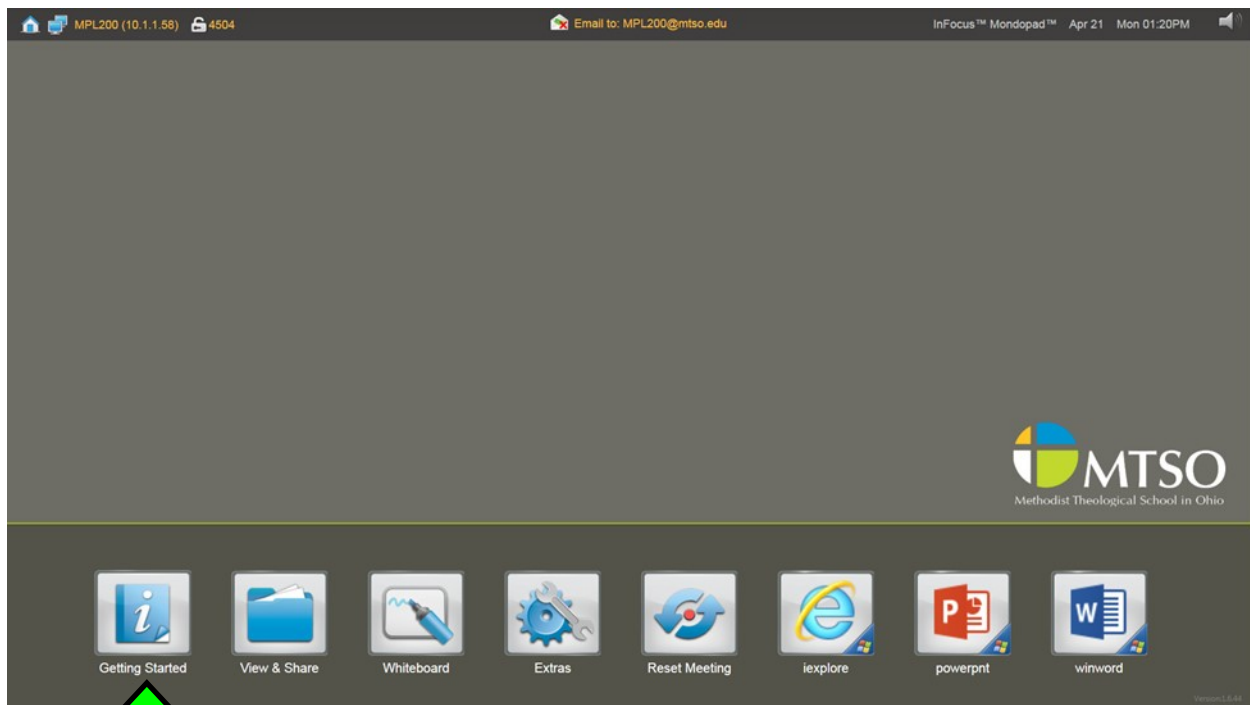


- **CLICK "View & Share" ON SCREEN**



- **CLICK THE THUMBDRIVE ICON ON THE SCREEN TO ACCESS FILES**

UPLOAD PRESENTATION TO MONDOPAD



CLICK "GETTING STARTED" ON THE MONDOPAD HOME SCREEN

Presentations Remote Connections Wireless Control

To present a file with Mondopad™, use a USB key or send the file via Email or upload it using your browser. Then open the file in View & Share.

Email: Attach the file to an email and send it to MPL200@mtso.edu

Upload with Browser: [Company Network](#)

First, connect to the network.
Second, enter <http://10.1.1.58> in your browser and enter 3208 as the access code.
Or use a QR Code reader on your mobile device to automatically load the correct URL

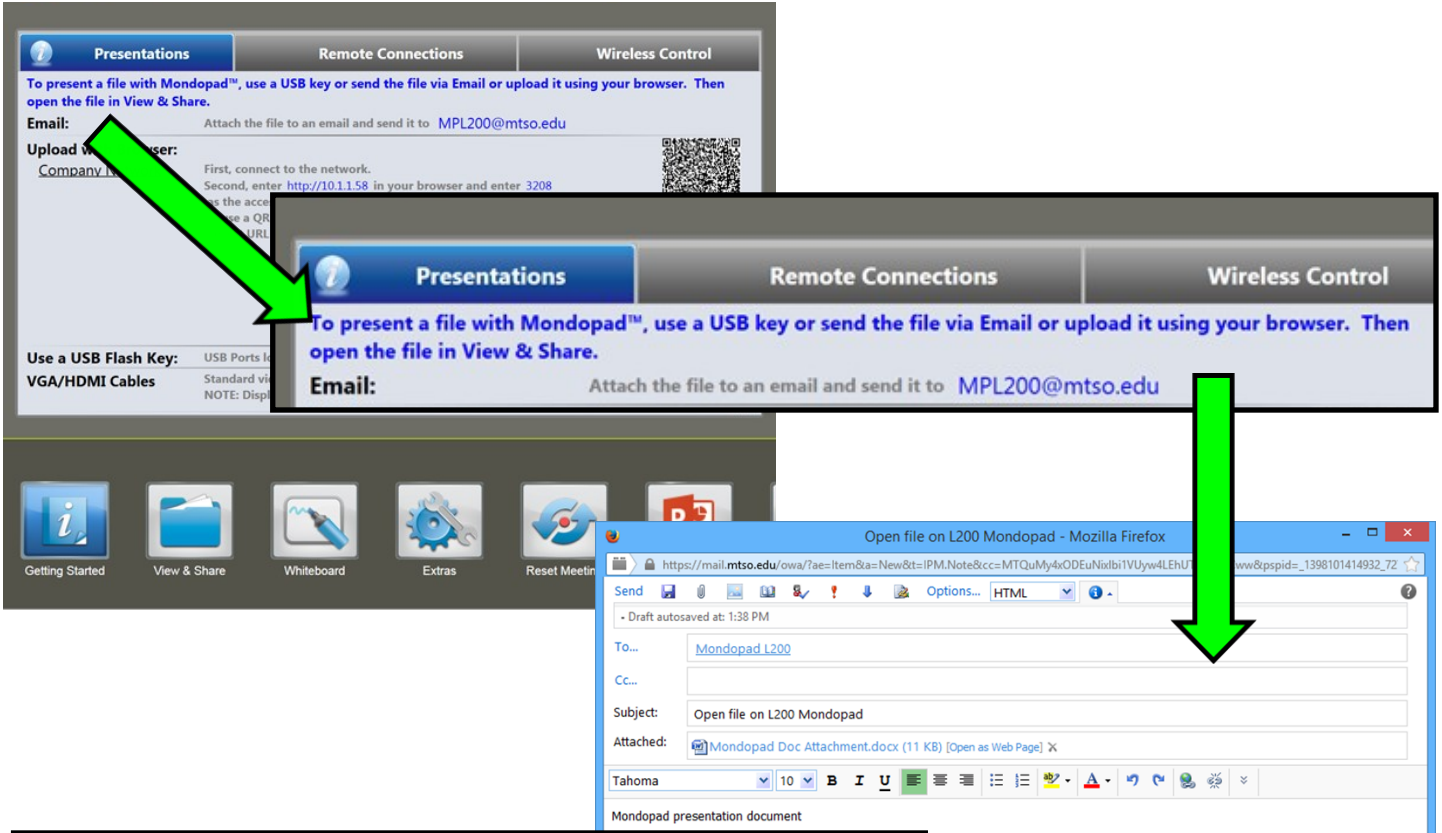
Use a USB Flash Key: USB Ports located on the right hand side →
VGA/HDMI Cables Standard video input ports located on the back of the display.
NOTE: Display input source must be changed.

4 WAYS TO UPLOAD/SHARE A PRESENTATION

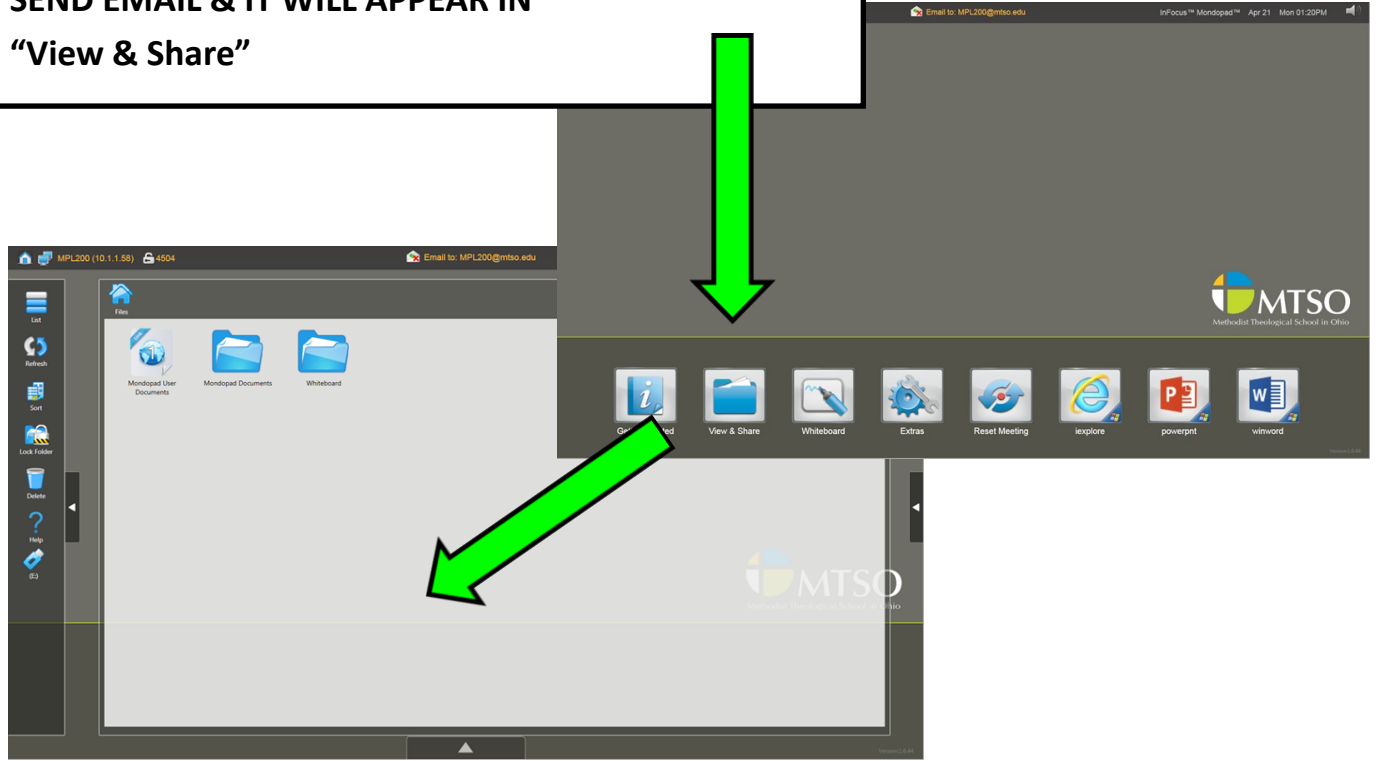
1. EMAIL
2. UPLOAD VIA BROWSER
3. USB DISK
4. VGA/HDMI TO YOUR COMPUTER

Getting Started View & Share Whiteboard Extras Reset Meeting PowerPoint

EMAIL PRESENTATION TO MONDOPAD



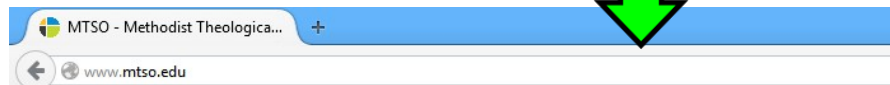
- COMPOSE A NEW EMAIL WITH THE MONDOPAD EMAIL ADDRESS
- ATTACH THE PRESENTATION DOCUMENT TO THE EMAIL
- SEND EMAIL & IT WILL APPEAR IN "View & Share"



UPLOAD PRESENTATION TO MONDOPAD (BROWSER)



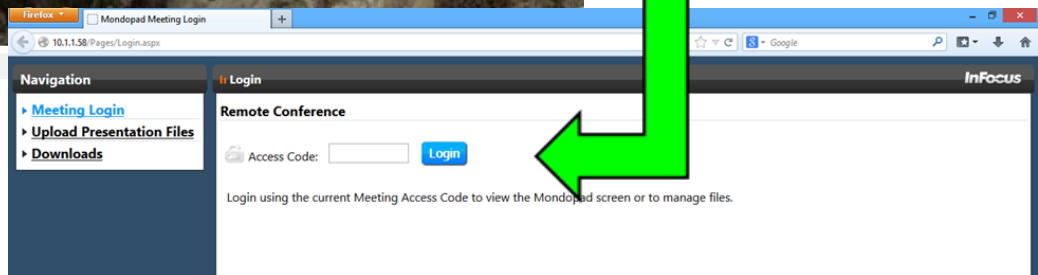
**CLICK "Getting Started"
ON THE HOME SCREEN
THEN CLICK THE "Presentations" TAB**



**TYPE IN THE <http://> LINK
ADDRESS INTO YOUR DEVICE'S
BROWSER**

3208

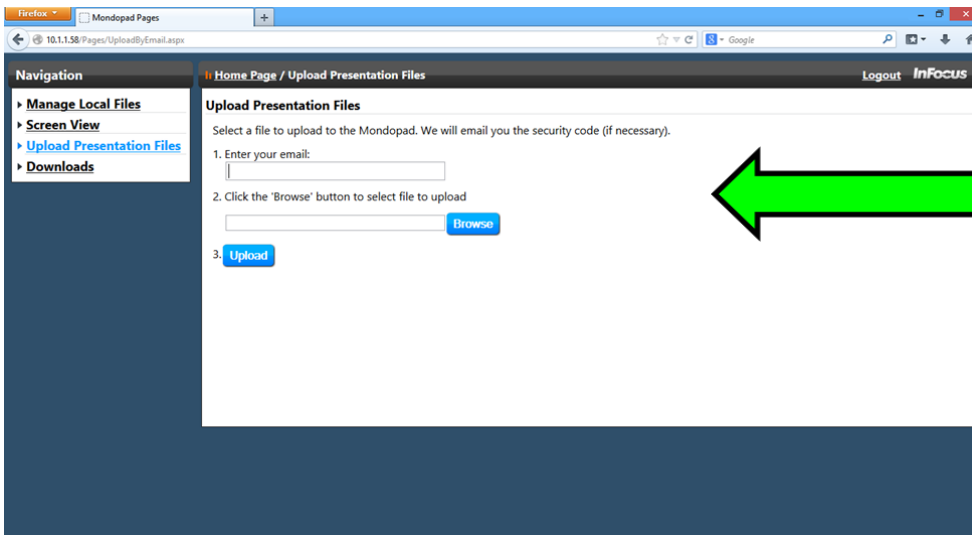
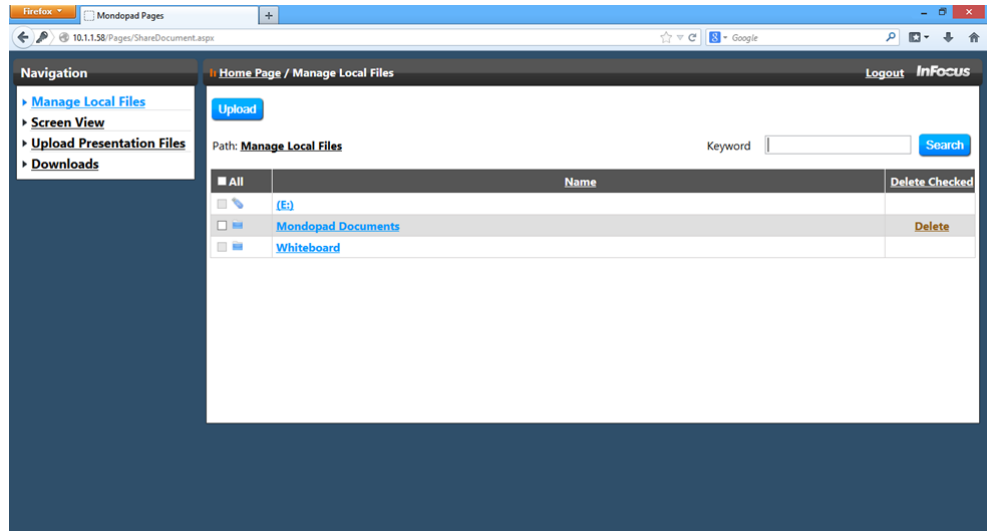
ACCESS CODE



**THE MEETING LOGIN PAGE WILL
APPEAR ON YOUR BROWSER.
ENTER THE CODE GIVEN IN THE INSTRUCTIONS.
*CODES WILL VARY**

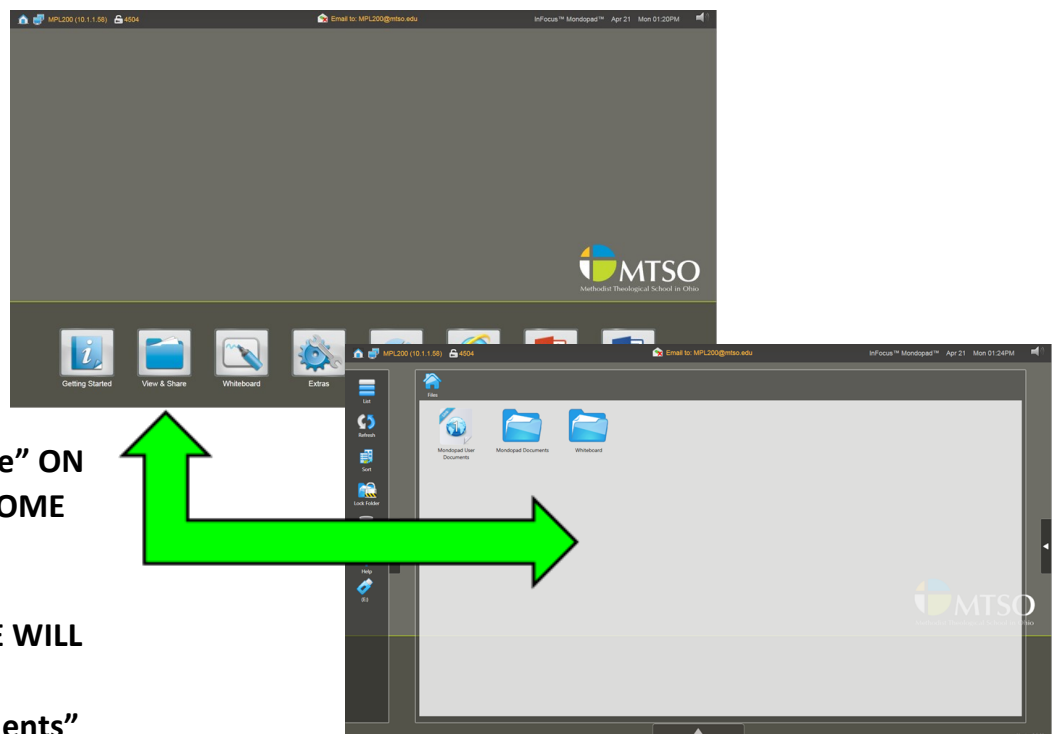
UPLOAD PRESENTATION TO MONDOPAD (BROWSER, CONT.)


CLICK
“Upload Presentation Files”

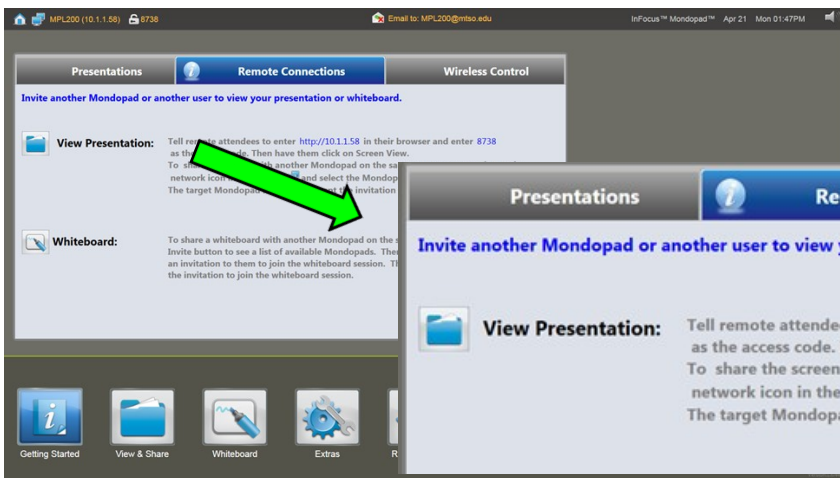


- **ENTER YOUR EMAIL ADDRESS**
- **CLICK “BROWSE” TO UPLOAD THE PRESENTATION FILE**

- **CLICK “View & Share” ON THE MONDOPAD HOME SCREEN**
- **PRESENTATION FILE WILL BE AVAILABLE IN “Mondopad Documents”**



VIEW MONDOPAD PRESENTATION ON DEVICE (REMOTE CONN.)



MTSO - Methodist Theologica...
www.mtso.edu

8738 ACCESS CODE

TYPE IN THE <http://> LINK ADDRESS INTO YOUR DEVICE'S BROWSER

The Sermons of Wesley Project

Navigation
Meeting Login
Upload Presentation Files
Downloads

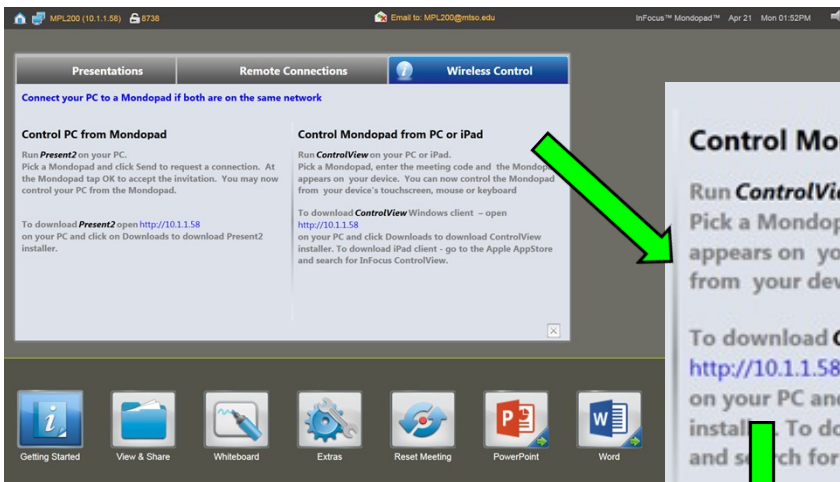
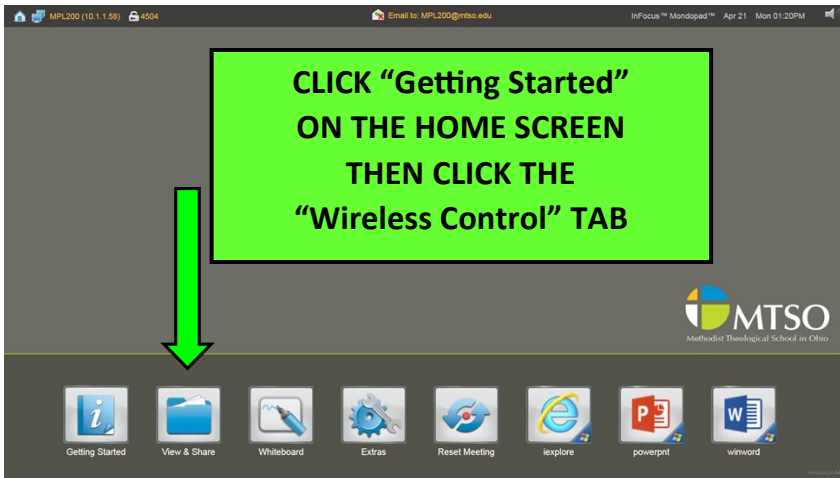
Remote Conference
Access Code: Login

Login using the current Meeting Access Code to view the Mondopad screen or to manage files.

The screenshot shows a browser window displaying the MTSO website. A green callout box contains the text: "TYPE IN THE http:// LINK ADDRESS INTO YOUR DEVICE'S BROWSER". A green arrow points from the callout box to the browser's address bar. To the right of the browser, a box contains the text "8738 ACCESS CODE". A green arrow points from this box to the "Access Code" input field on the "Remote Conference" login page. The login page has a "Login" button and a note: "Login using the current Meeting Access Code to view the Mondopad screen or to manage files."

- THE MEETING LOGIN PAGE WILL APPEAR ON YOUR BROWSER.
- ENTER THE CODE GIVEN IN THE INSTRUCTIONS.
*CODES WILL VARY
- THE MONDOPAD SCREEN WILL APPEAR ON YOUR DEVICE

CONTROL MONDOPAD FROM PC/MAC

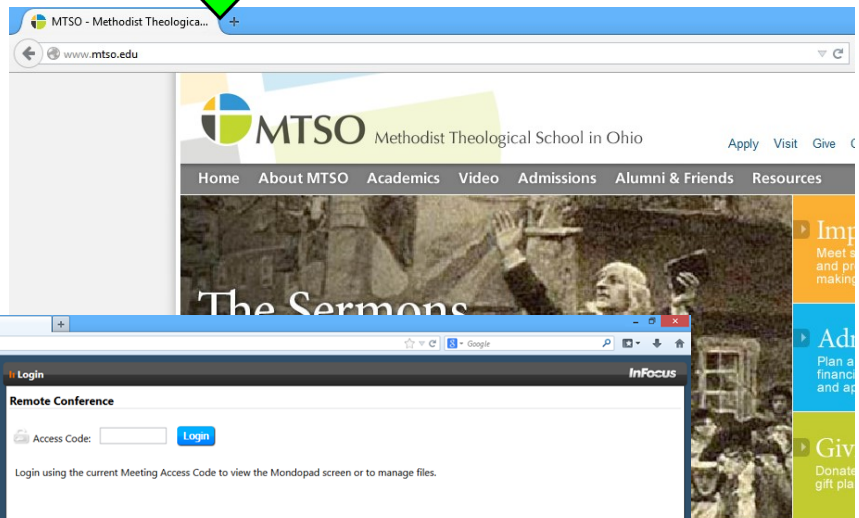


Control Mondopad from PC or iPad

Run **ControlView** on your PC or iPad. Pick a Mondopad, enter the meeting code and the Mondopad appears on your device. You can now control the Mondopad from your device's touchscreen, mouse or keyboard

To download **ControlView** Windows client - open <http://10.1.1.58> on your PC and click Downloads to download ControlView installer. To download iPad client - go to the Apple AppStore and search for InFocus ControlView.

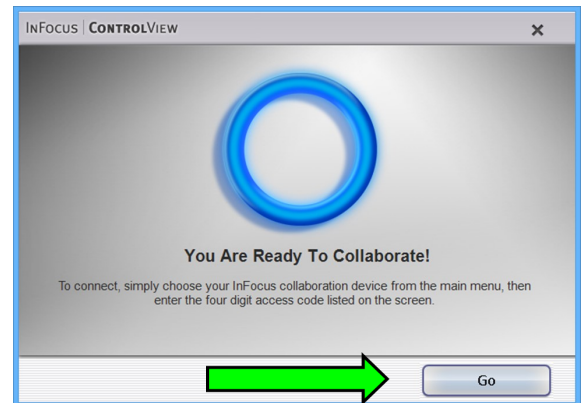
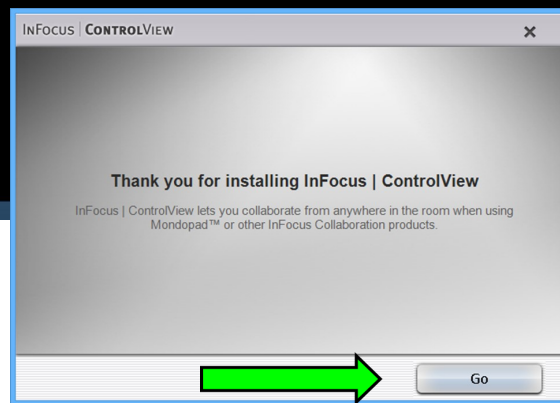
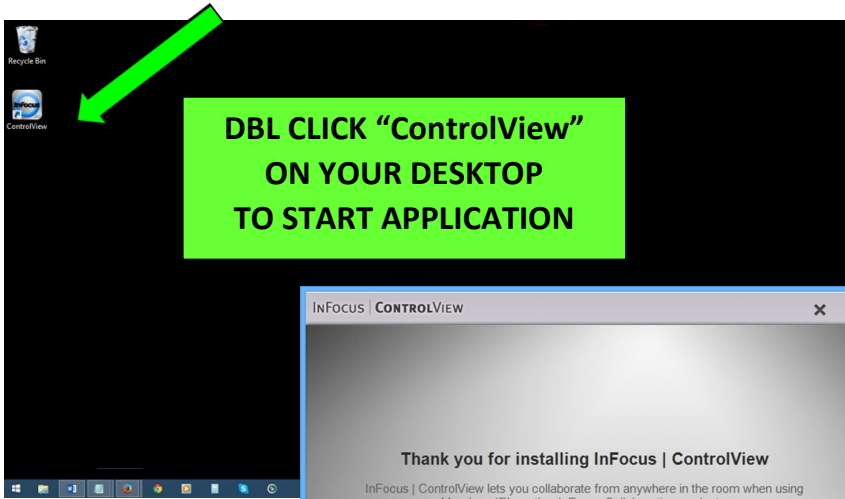
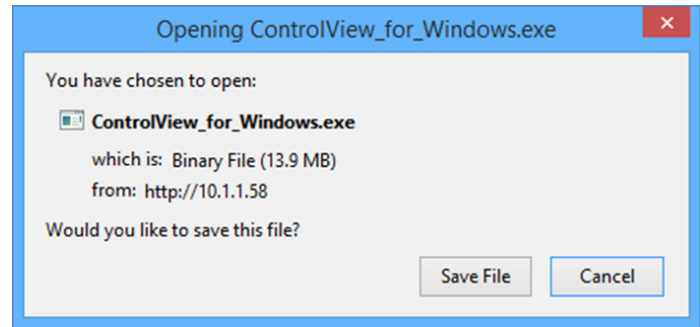
TYPE IN THE <http://> LINK ADDRESS INTO YOUR DEVICE'S BROWSER



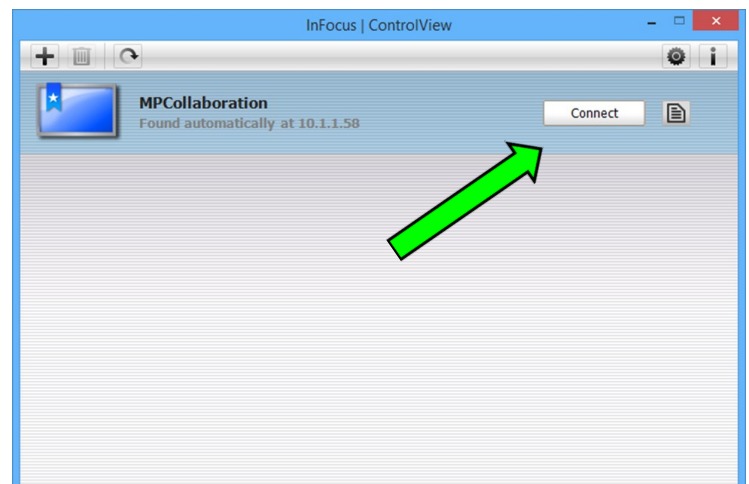
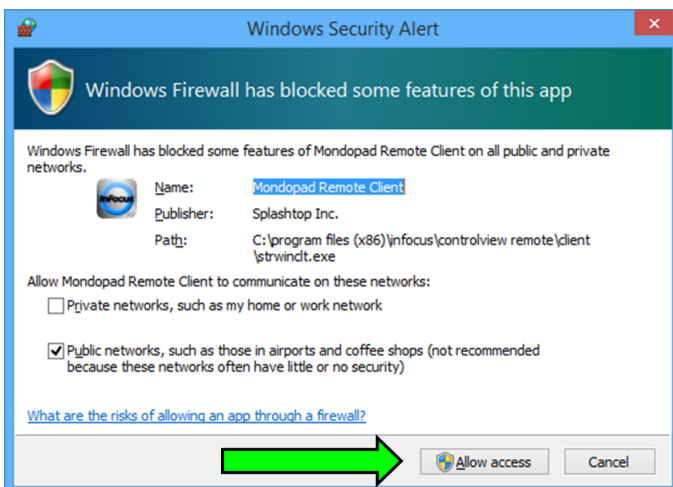
CLICK "Downloads"
TO ACCESS THE
"ControlView" FILE

CONTROL MONDOPAD FROM PC/MAC (CONT.)

- **DOWNLOAD “ControlView”**
- **SAVE FILE**
- **ONCE DOWNLOADED INSTALL THE APPLICATION BY DBL-CLICKING THE SAVED FILE**
- **THERE WILL BE A SHORTCUT PLACED ON YOUR DESKTOP**

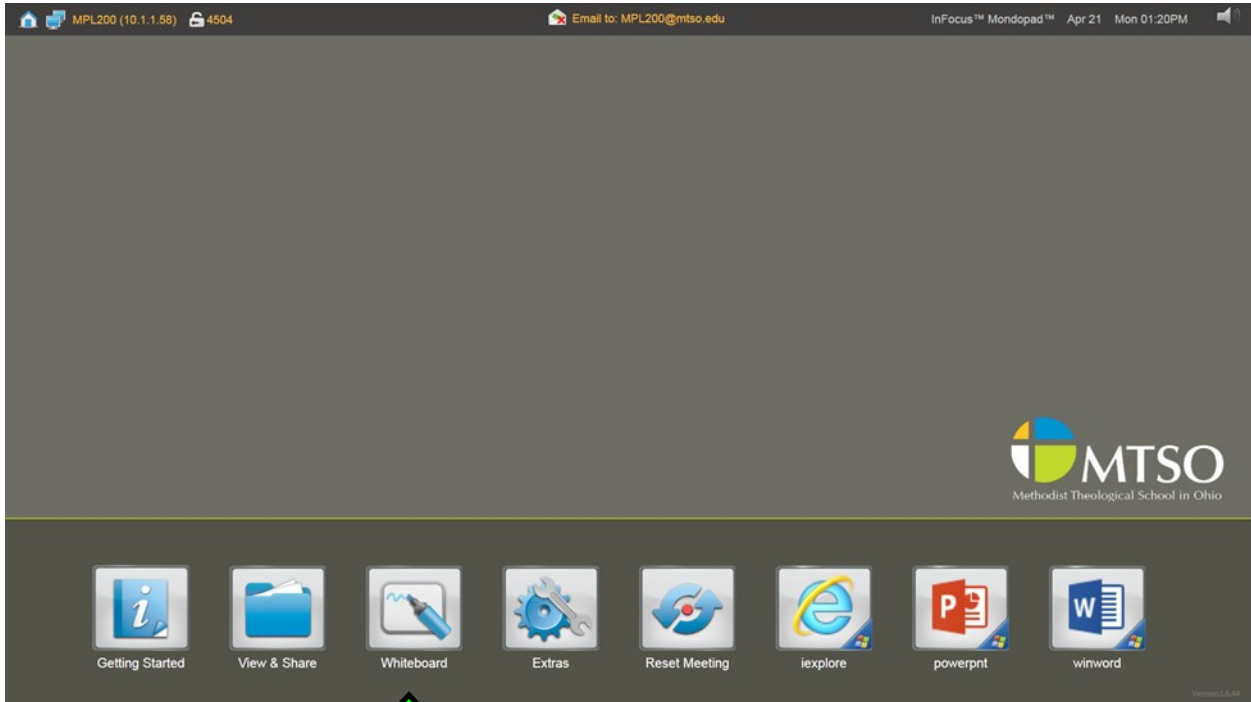


CLICK “GO” TO START THE CONNECTION

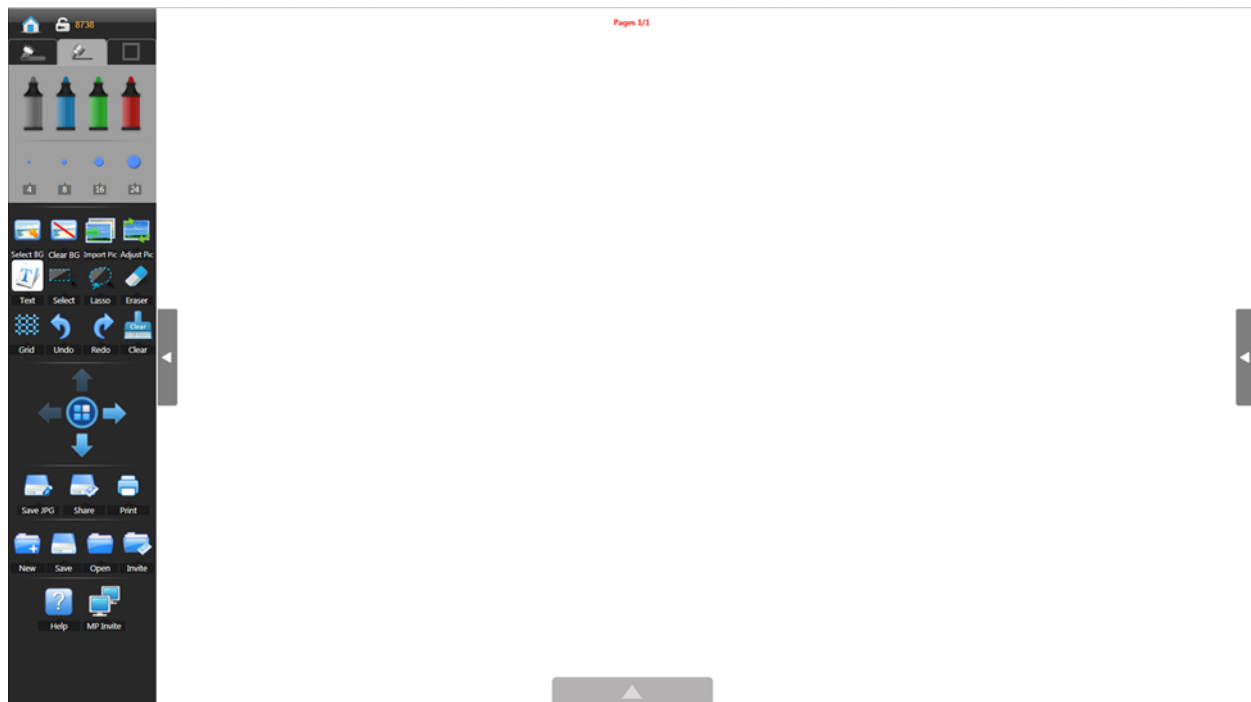


**CLICK “ALLOW ACCESS” & THEN “CONNECT”
THE MONDOPAD SCREEN WILL THEN APPEAR ON YOUR DEVICE**

MONDOPAD WHITEBOARD

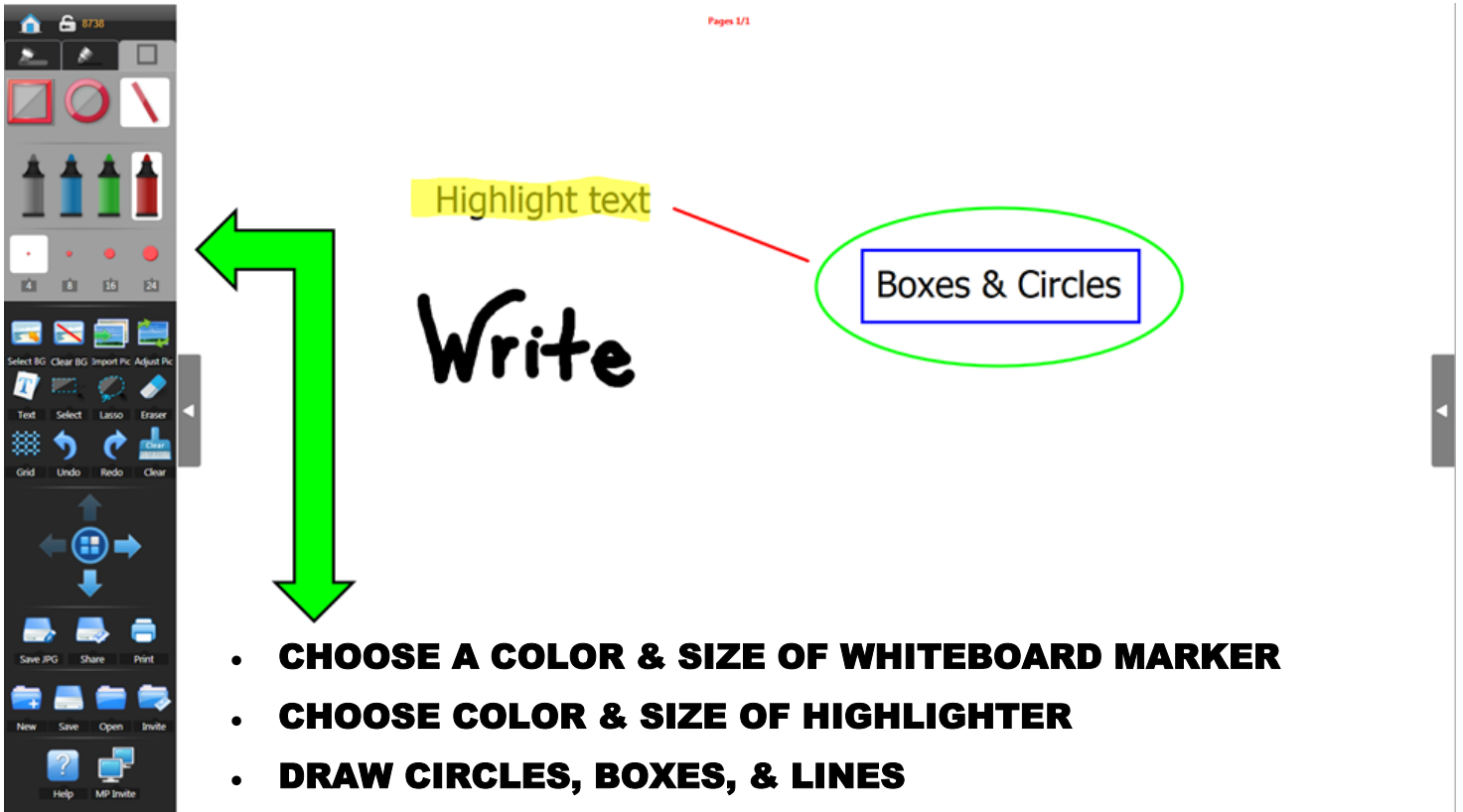


**CLICK "WHITEBOARD" ON
THE MONDOPAD HOME SCREEN**



MONDOPAD WHITEBOARD (CONT.)

**WRITE WITH YOUR FINGER/STYLUS ON THE WHITEBOARD
OR TYPE USING THE KEYBOARD**



- **CHOOSE A COLOR & SIZE OF WHITEBOARD MARKER**
- **CHOOSE COLOR & SIZE OF HIGHLIGHTER**
- **DRAW CIRCLES, BOXES, & LINES**
- **UNDO, ERASE, OR CLEAR WHITEBOARD**
- **UPLOAD IMAGES AS BACKGROUND OR FOR DISPLAY**