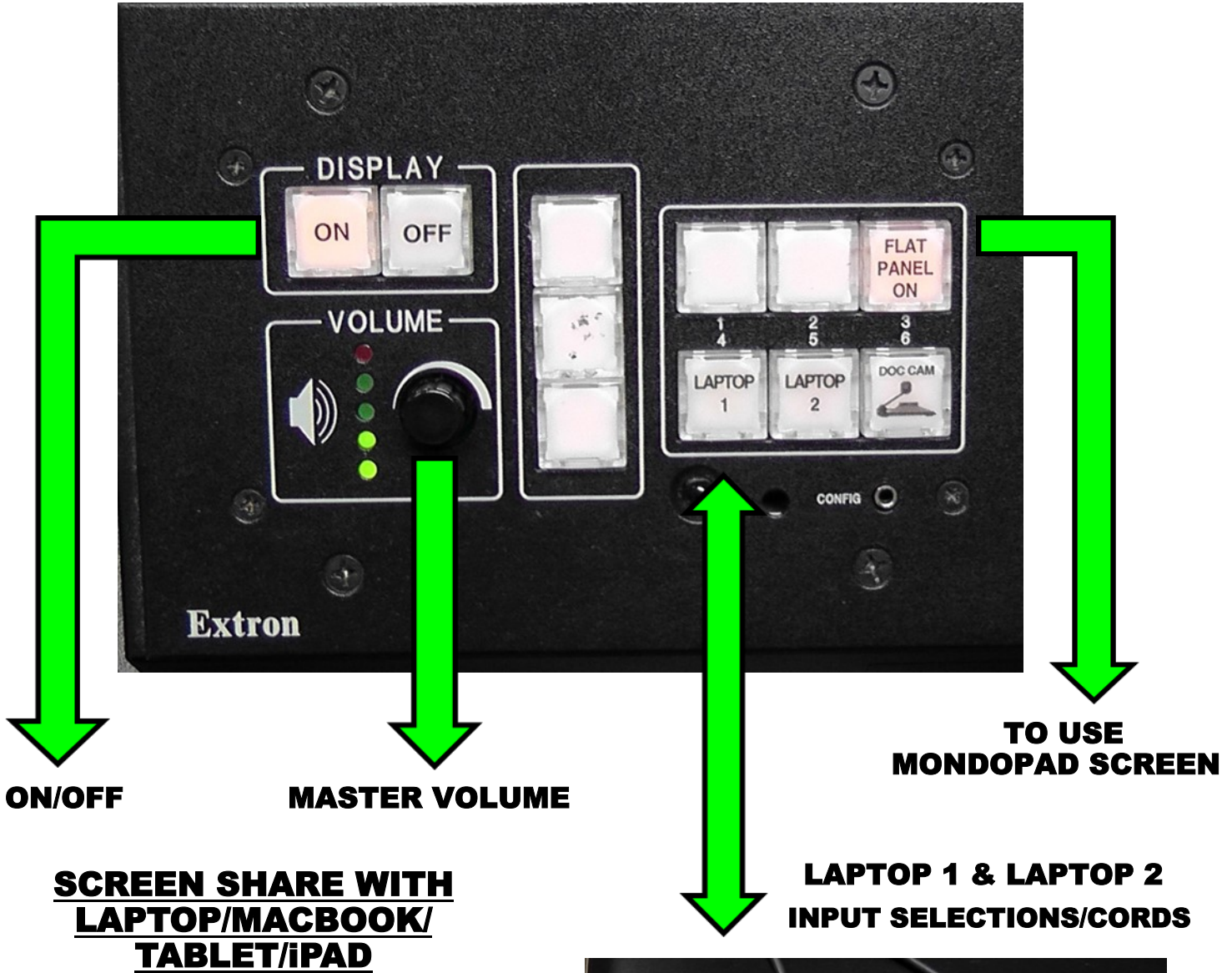


G140 MONDOPAD GUIDE



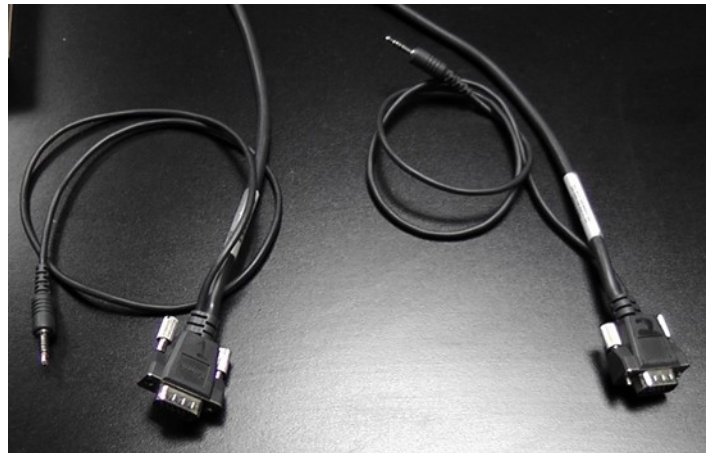
TURNING ON SYSTEM	2
SHARE MONDOPAD SCREEN WITH LAPTOP/MACBOOK/TABLET/IPAD	2
UPLOAD PRESENTATION FILE TO MONDOPAD	3 - 7
VIEW MONDOPAD ON DEVICE	8
CONTROL MONDOPAD FROM DEVICE	9 - 10
MONDOPAD WHITEBOARD	11 - 12

CONTROL PANEL ON PODIUM



**SCREEN SHARE WITH
LAPTOP/MACBOOK/
TABLET/IPAD**

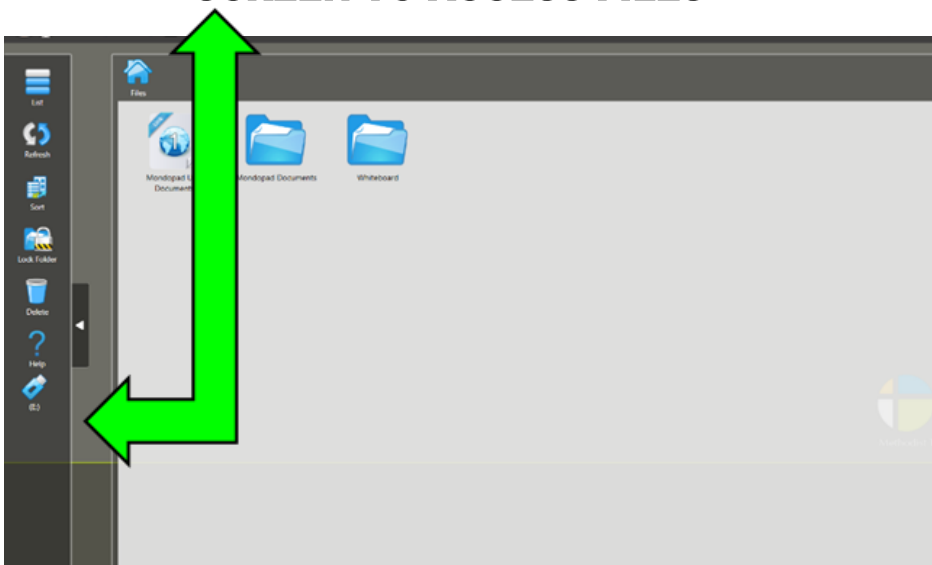
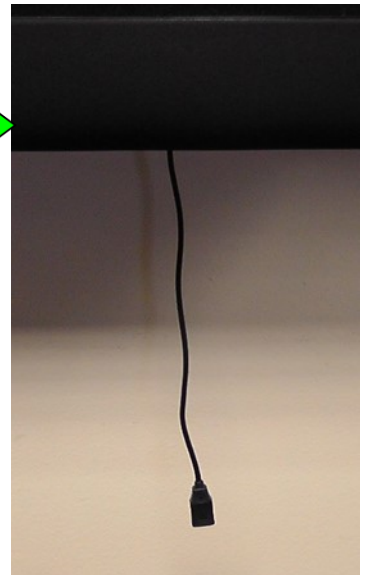
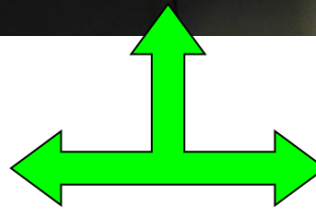
- **AN ADAPTER MAY NEED TO BE USED BETWEEN THE DEVICE AND THE VGA CORD**
- **ONCE DEVICE IS CONNECTED PRESS THE CORRESPONDING SELECTION ON THE CONTROL PANEL TO SHARE SCREEN**
- **LAPTOP 1 = LAPTOP 1 CORD**
- **LAPTOP 2 = LAPTOP 2 CORD**



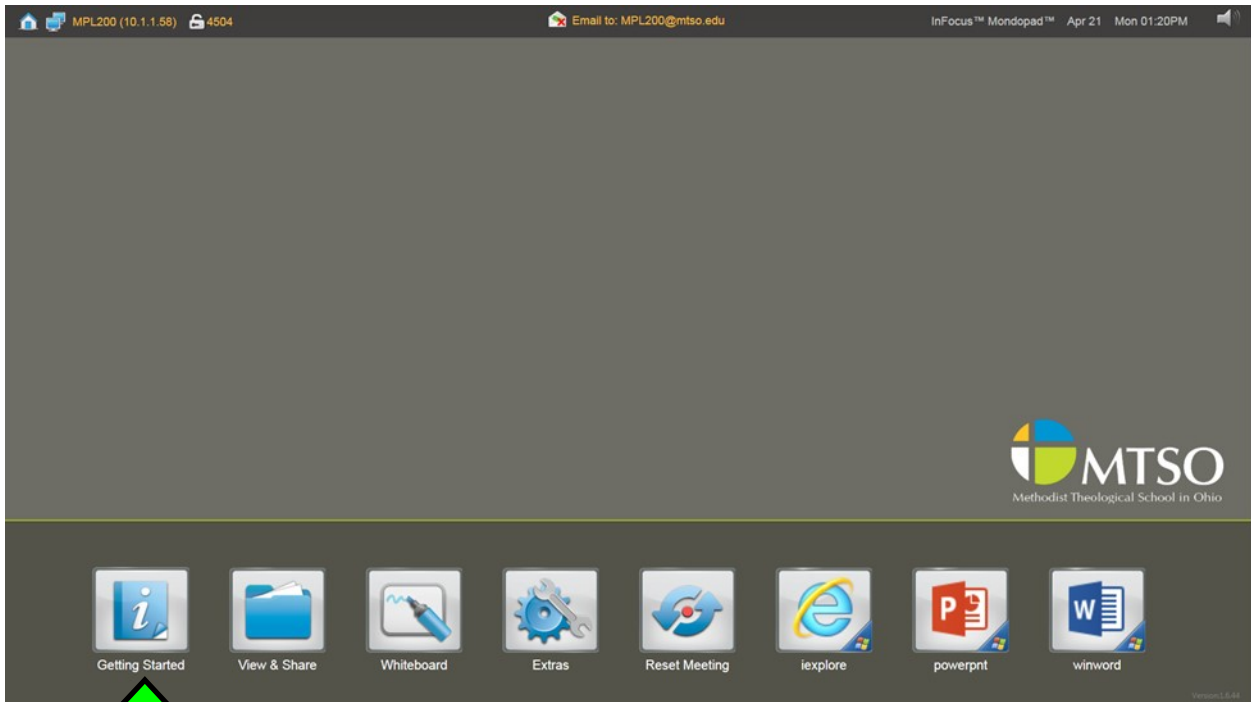
VIEW FILE FROM DISK (THUMBDRIVE)



- **ATTACH THUMBDRIVE TO USB CORD**
- **CLICK “View & Share” ON SCREEN**
- **CLICK THE THUMBDRIVE ICON ON THE SCREEN TO ACCESS FILES**



UPLOAD PRESENTATION TO MONDOPAD



CLICK "GETTING STARTED" ON THE MONDOPAD HOME SCREEN

Presentations Remote Connections Wireless Control

To present a file with Mondopad™, use a USB key or send the file via Email or upload it using your browser. Then open the file in View & Share.

Email: Attach the file to an email and send it to MPL200@mtso.edu

Upload with Browser: [Company Network](#)

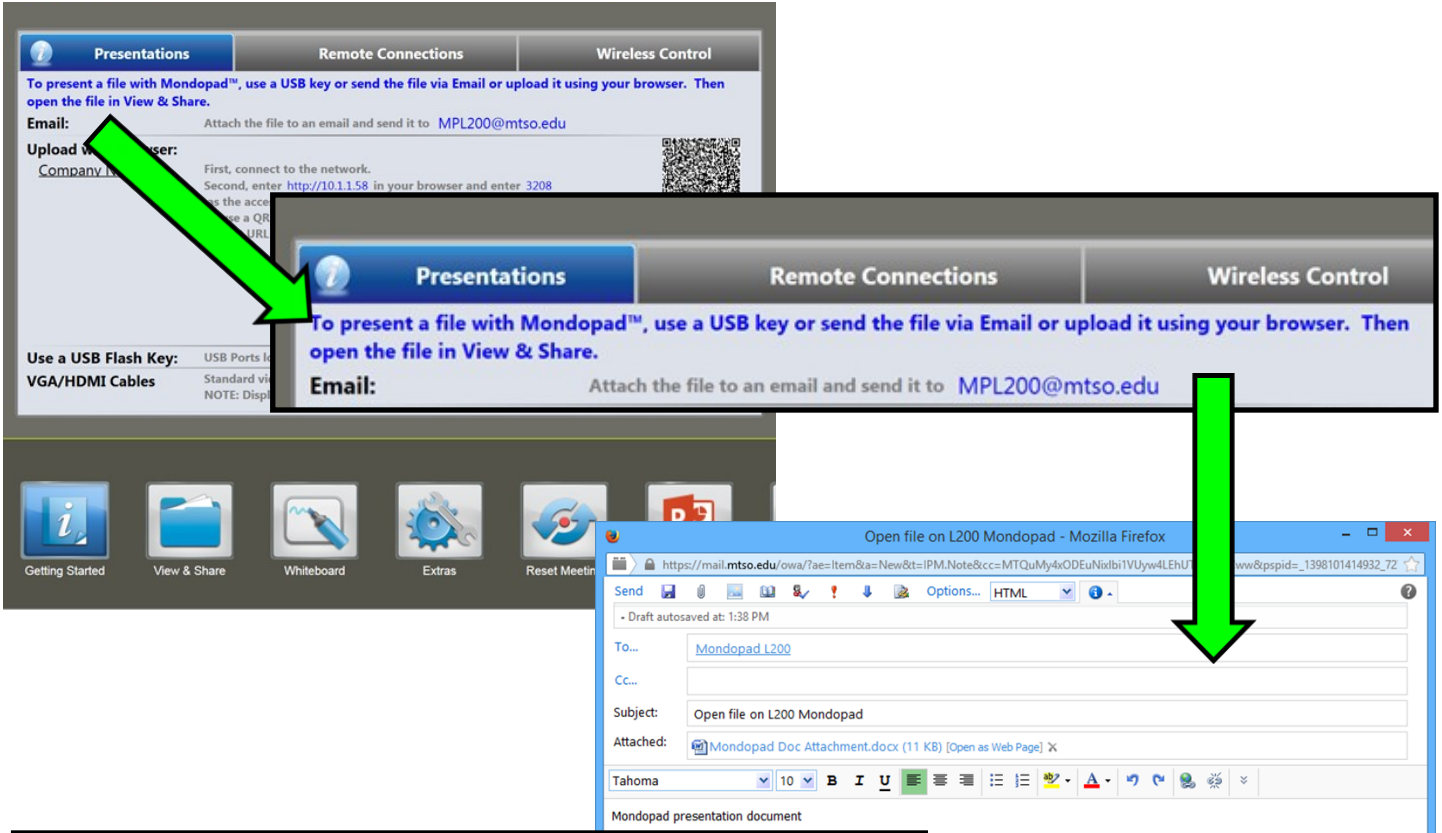
First, connect to the network.
Second, enter <http://10.1.1.58> in your browser and enter 3208 as the access code.
Or use a QR Code reader on your mobile device to automatically load the correct URL

Use a USB Flash Key: USB Ports located on the right hand side →
Standard video input ports located on the back of the display.
NOTE: Display input source must be changed.

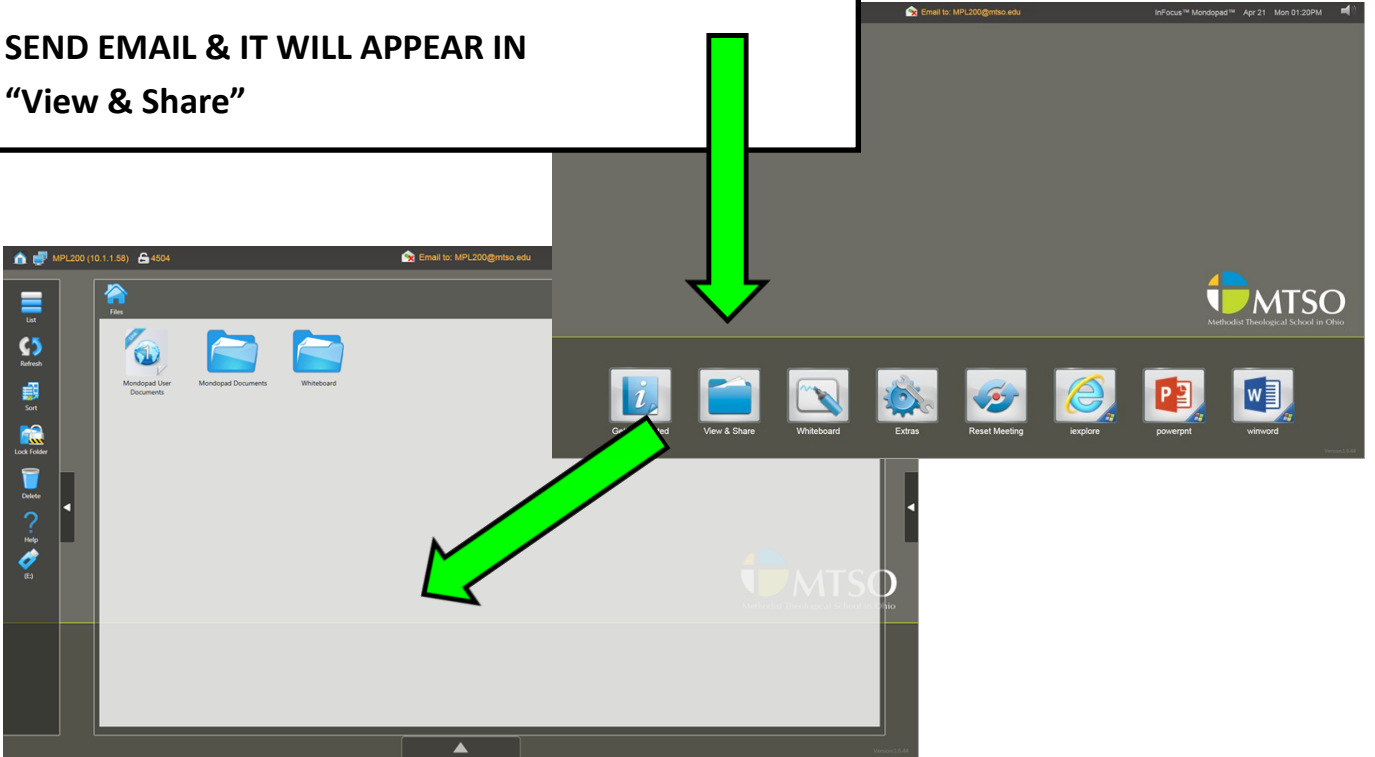
4 WAYS TO UPLOAD/SHARE A PRESENTATION

1. EMAIL
2. UPLOAD VIA BROWSER
3. USB DISK
4. VGA/HDMI TO YOUR COMPUTER

EMAIL PRESENTATION TO MONDOPAD



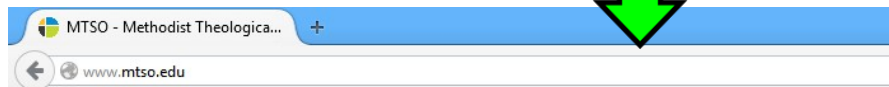
- COMPOSE A NEW EMAIL WITH THE MONDOPAD EMAIL ADDRESS
- ATTACH THE PRESENTATION DOCUMENT TO THE EMAIL
- SEND EMAIL & IT WILL APPEAR IN "View & Share"



UPLOAD PRESENTATION TO MONDOPAD (BROWSER)



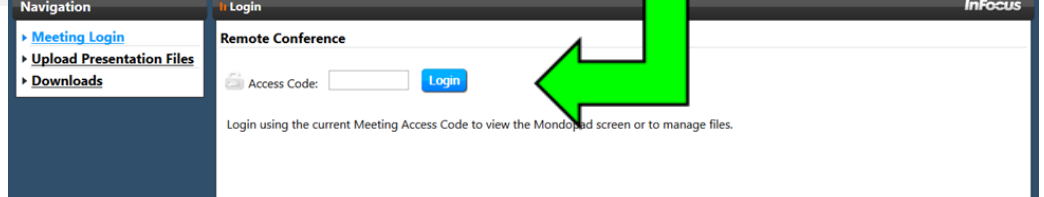
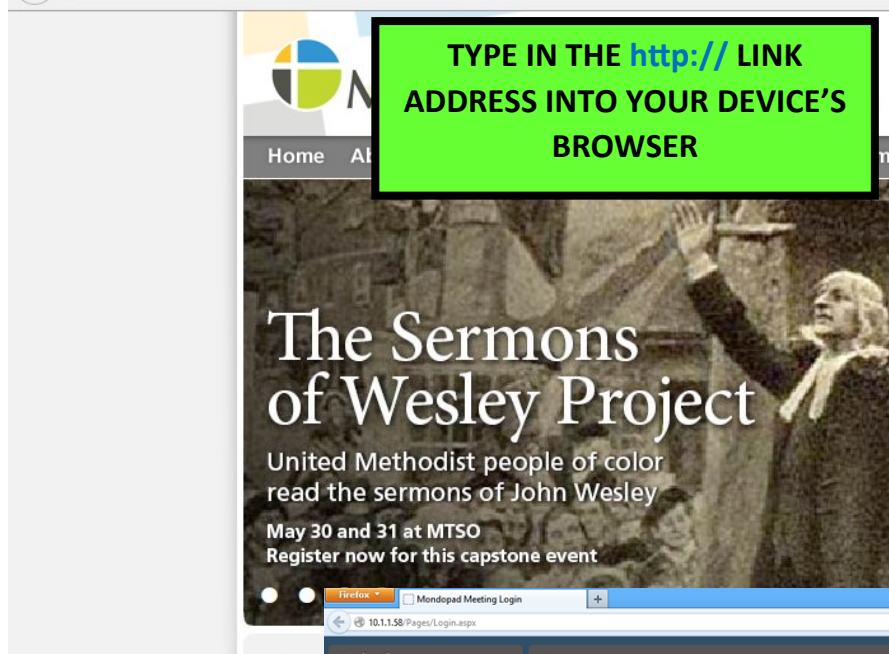
**CLICK "Getting Started"
ON THE HOME SCREEN
THEN CLICK THE "Presentations" TAB**



**TYPE IN THE <http://> LINK
ADDRESS INTO YOUR DEVICE'S
BROWSER**

3208

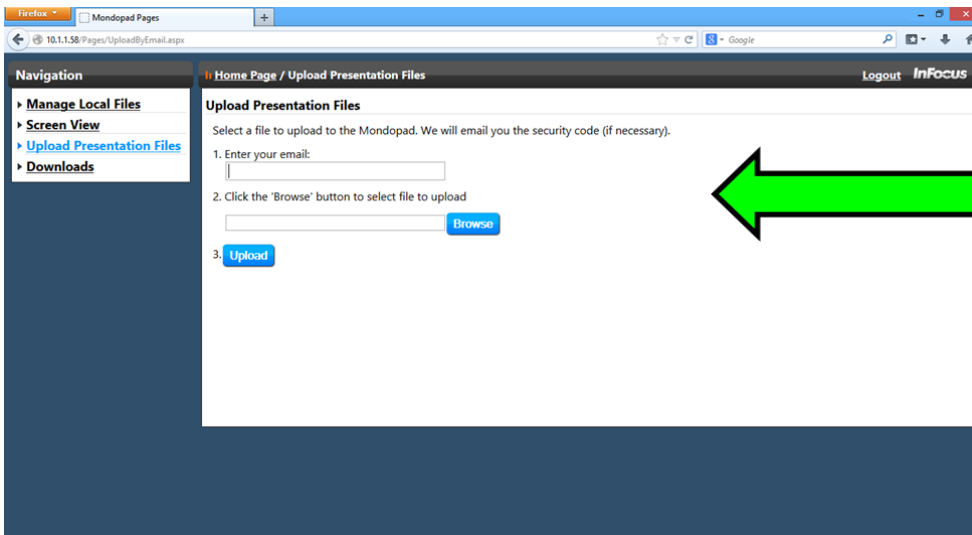
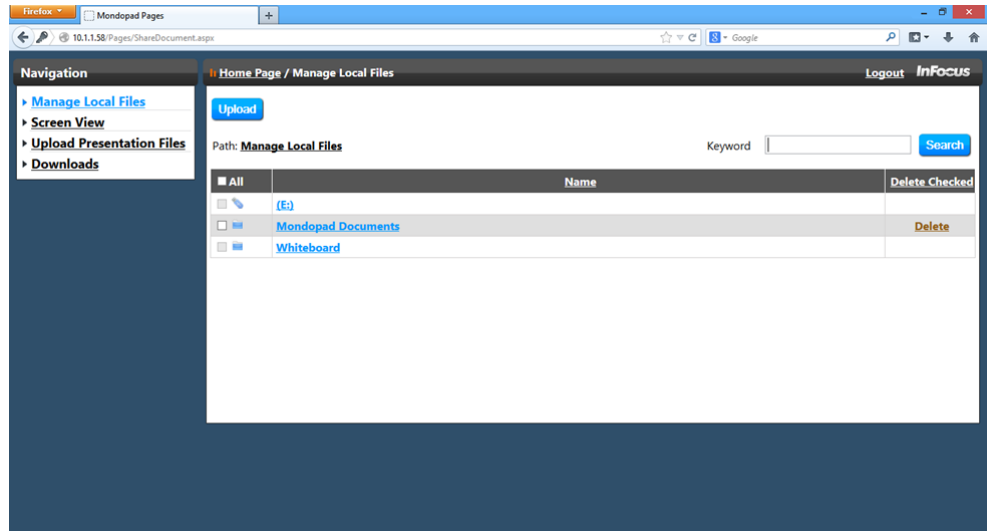
ACCESS CODE



**THE MEETING LOGIN PAGE WILL
APPEAR ON YOUR BROWSER.
ENTER THE CODE GIVEN IN THE INSTRUCTIONS.
*CODES WILL VARY**

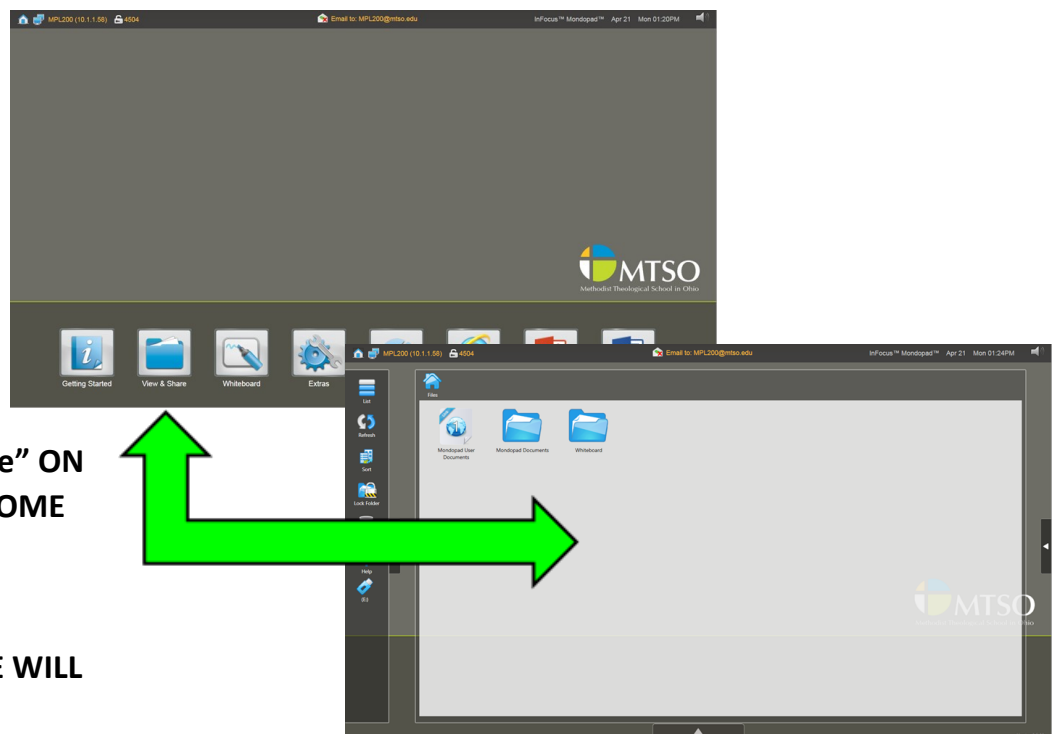
UPLOAD PRESENTATION TO MONDOPAD (BROWSER, CONT.)


CLICK
“Upload Presentation Files”

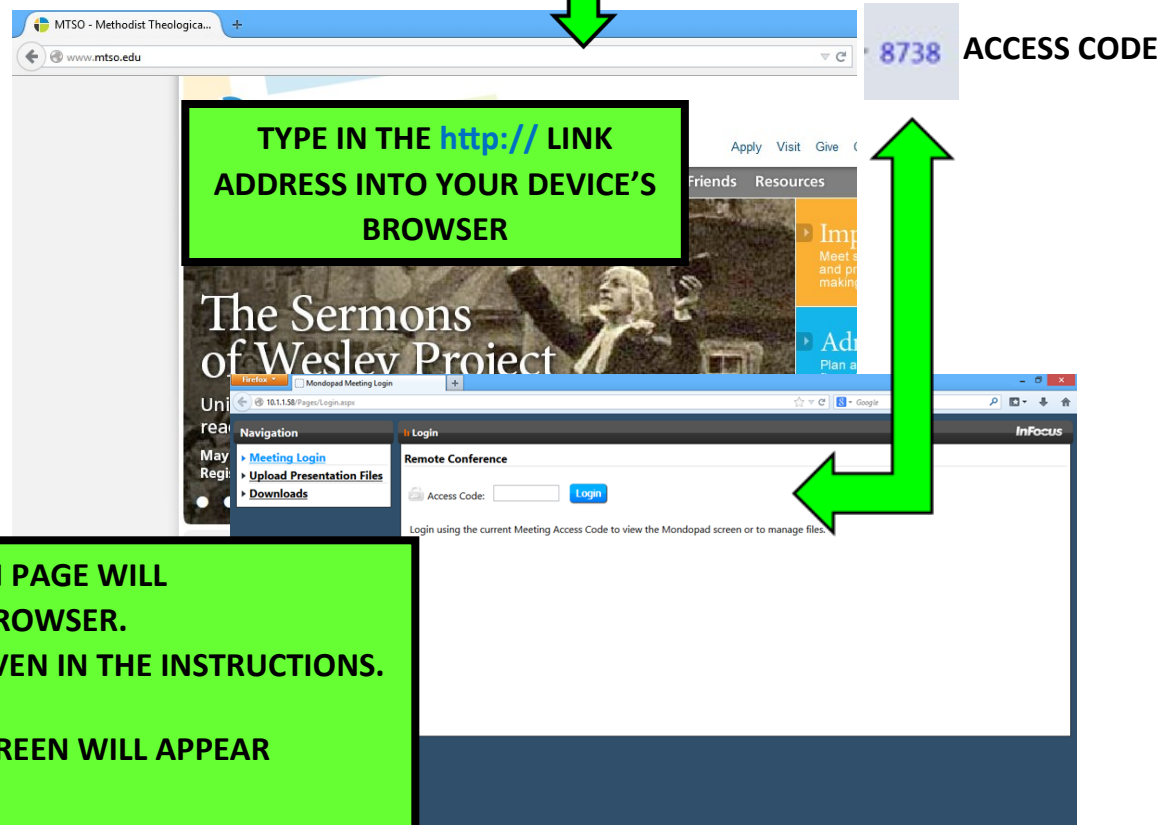
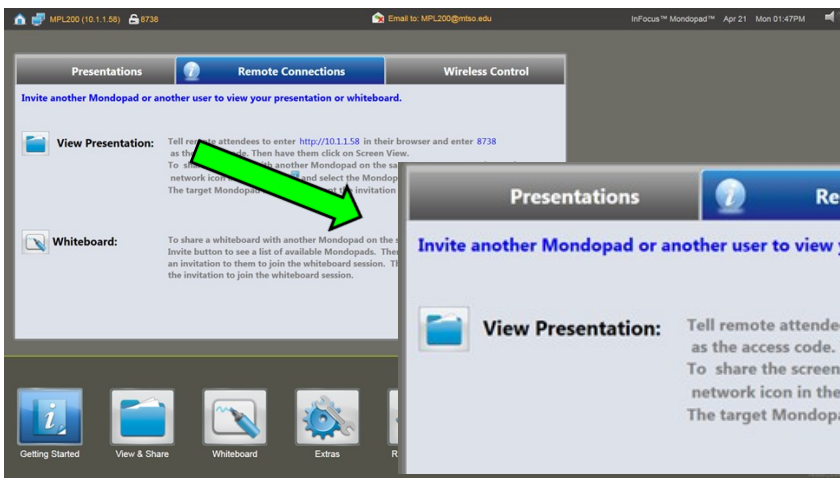


- **ENTER YOUR EMAIL ADDRESS**
- **CLICK “BROWSE” TO UPLOAD THE PRESENTATION FILE**

- **CLICK “View & Share” ON THE MONDOPAD HOME SCREEN**
- **PRESENTATION FILE WILL BE AVAILABLE IN “Mondopad Documents”**

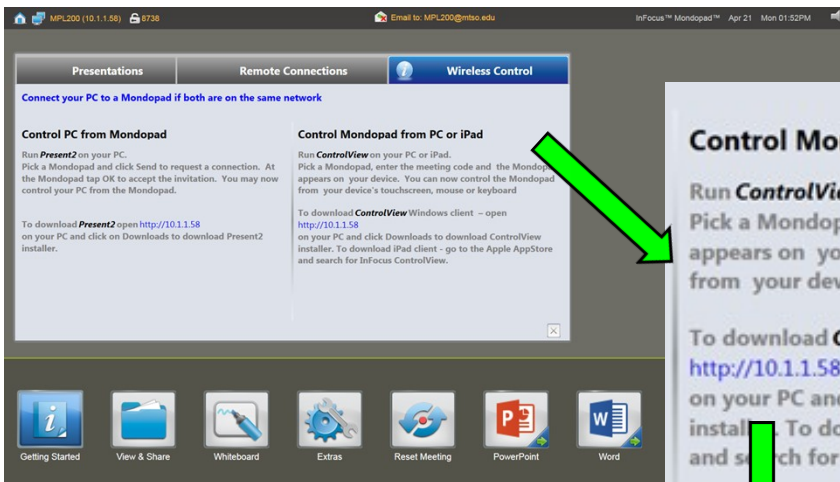
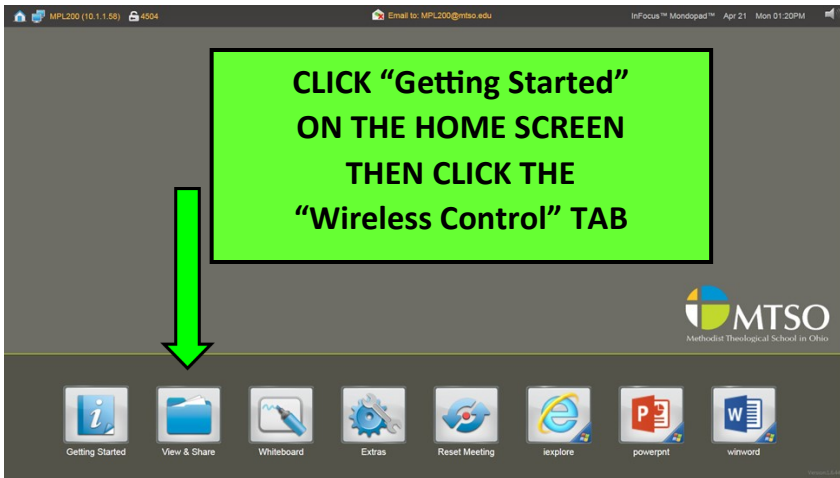


VIEW MONDOPAD PRESENTATION ON DEVICE (REMOTE CONN.)



- THE MEETING LOGIN PAGE WILL APPEAR ON YOUR BROWSER.
- ENTER THE CODE GIVEN IN THE INSTRUCTIONS.
*CODES WILL VARY
- THE MONDOPAD SCREEN WILL APPEAR ON YOUR DEVICE

CONTROL MONDOPAD FROM PC/MAC

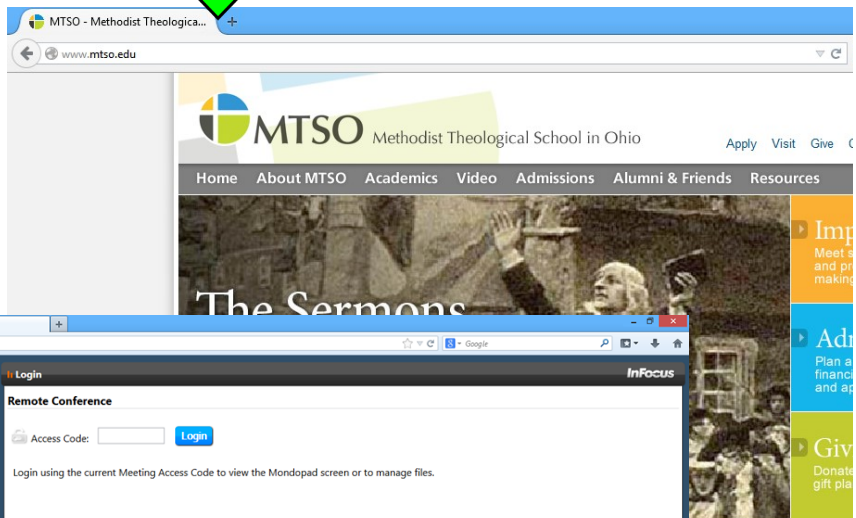


Control Mondopad from PC or iPad

Run **ControlView** on your PC or iPad. Pick a Mondopad, enter the meeting code and the Mondopad appears on your device. You can now control the Mondopad from your device's touchscreen, mouse or keyboard

To download **ControlView** Windows client - open <http://10.1.1.58> on your PC and click Downloads to download ControlView installer. To download iPad client - go to the Apple AppStore and search for InFocus ControlView.

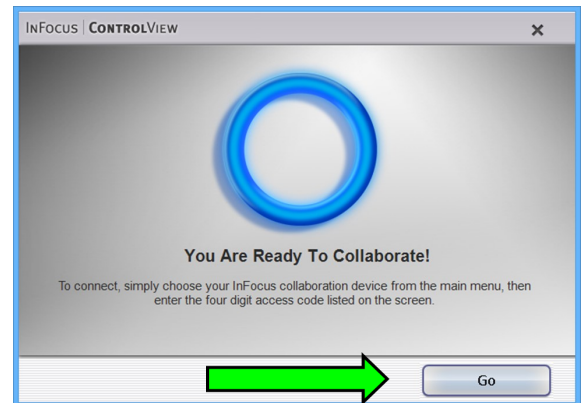
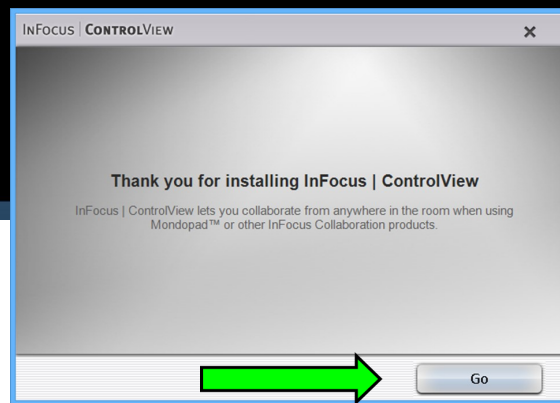
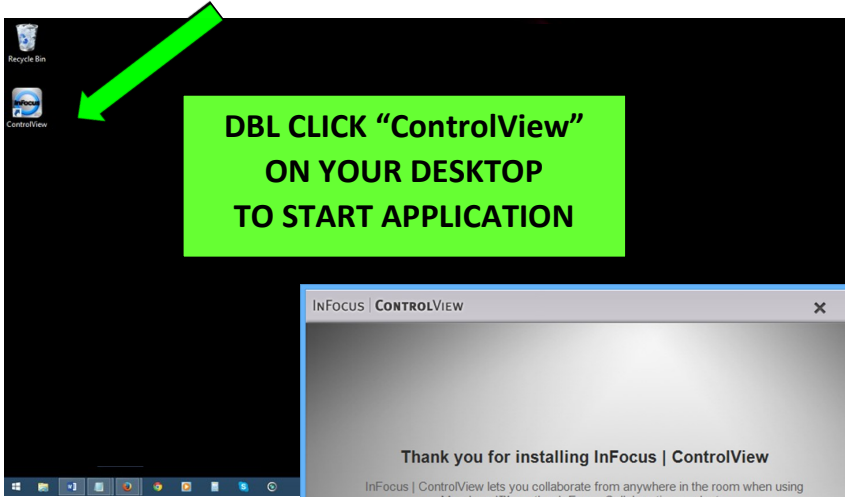
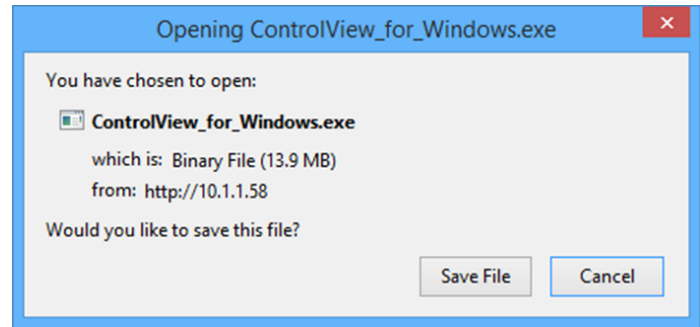
TYPE IN THE <http://> LINK ADDRESS INTO YOUR DEVICE'S BROWSER



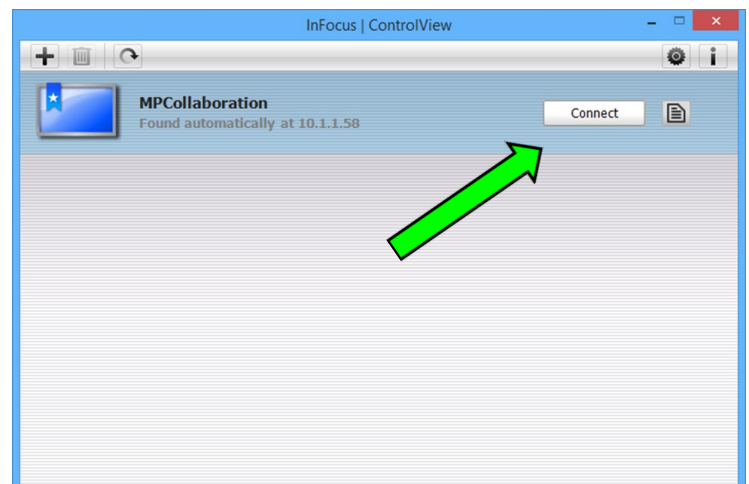
CLICK "Downloads"
TO ACCESS THE
"ControlView" FILE

CONTROL MONDOPAD FROM PC/MAC (CONT.)

- **DOWNLOAD “ControlView”**
- **SAVE FILE**
- **ONCE DOWNLOADED INSTALL THE APPLICATION BY DBL-CLICKING THE SAVED FILE**
- **THERE WILL BE A SHORTCUT PLACED ON YOUR DESKTOP**

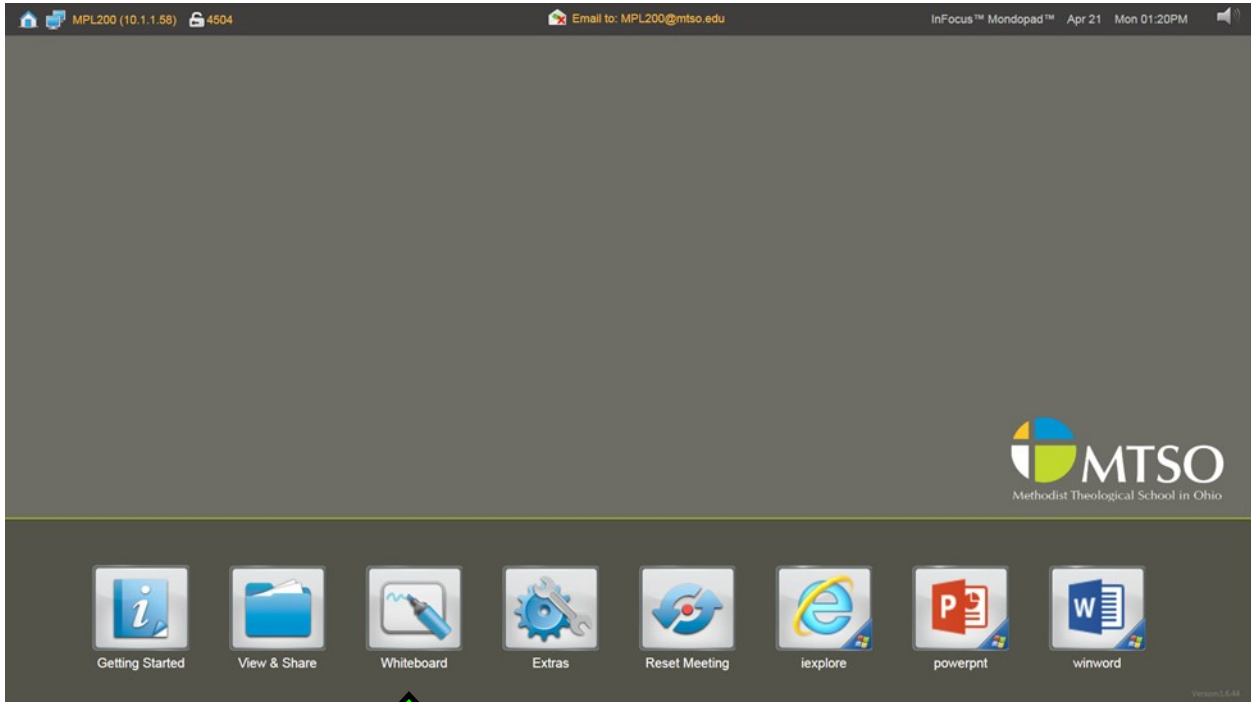


CLICK “GO” TO START THE CONNECTION

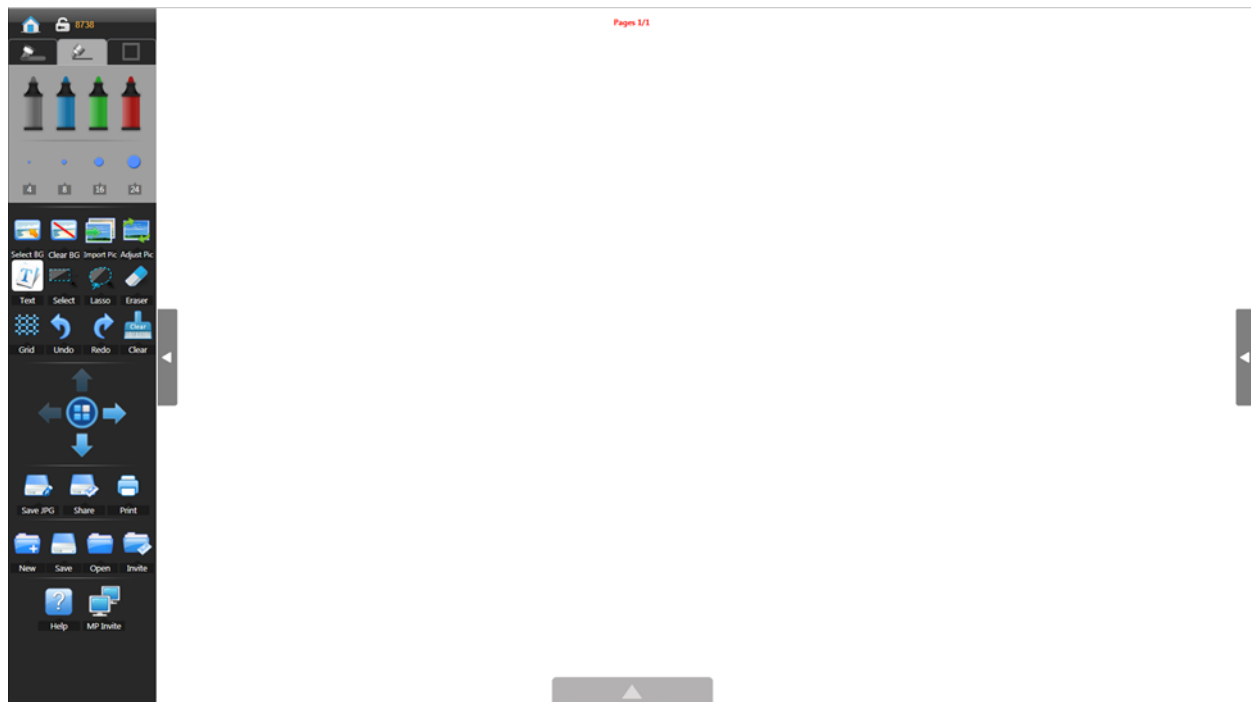


**CLICK “ALLOW ACCESS” & THEN “CONNECT”
THE MONDOPAD SCREEN WILL THEN APPEAR ON YOUR DEVICE**

MONDOPAD WHITEBOARD

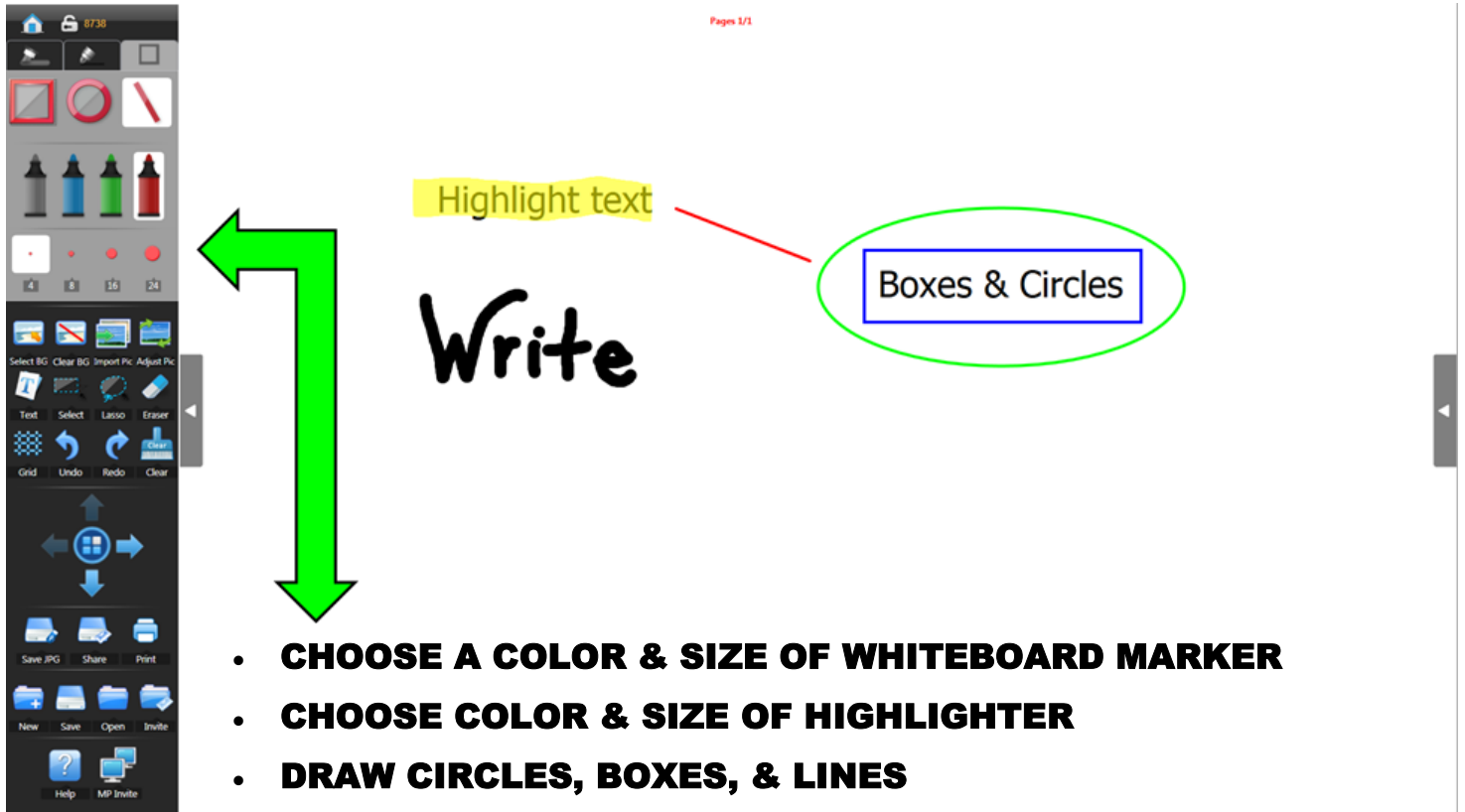


**CLICK "WHITEBOARD" ON
THE MONDOPAD HOME SCREEN**



MONDOPAD WHITEBOARD (CONT.)

**WRITE WITH YOUR FINGER/STYLUS ON THE WHITEBOARD
OR TYPE USING THE KEYBOARD**



- **CHOOSE A COLOR & SIZE OF WHITEBOARD MARKER**
- **CHOOSE COLOR & SIZE OF HIGHLIGHTER**
- **DRAW CIRCLES, BOXES, & LINES**
- **UNDO, ERASE, OR CLEAR WHITEBOARD**
- **UPLOAD IMAGES AS BACKGROUND OR FOR DISPLAY**