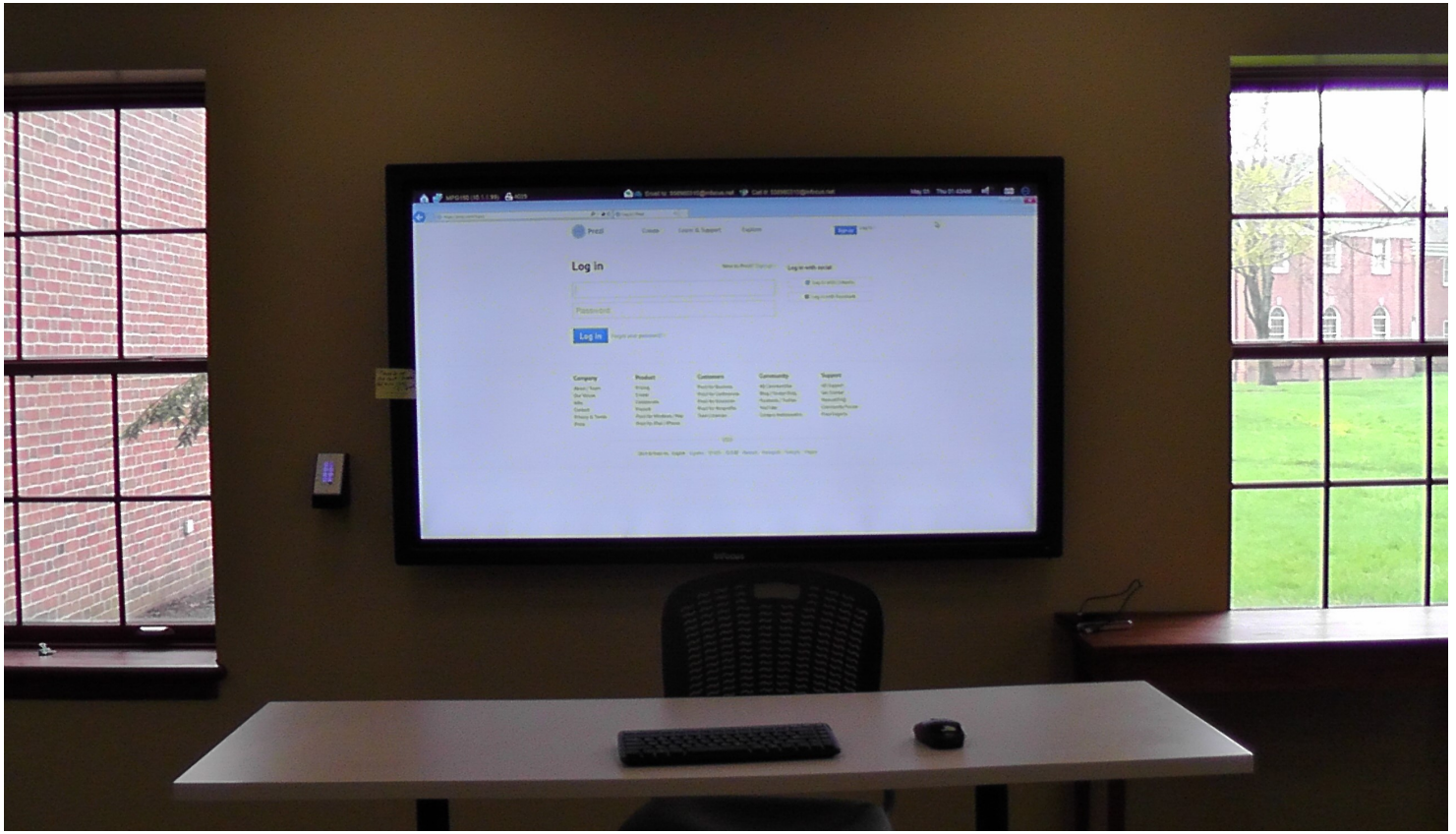
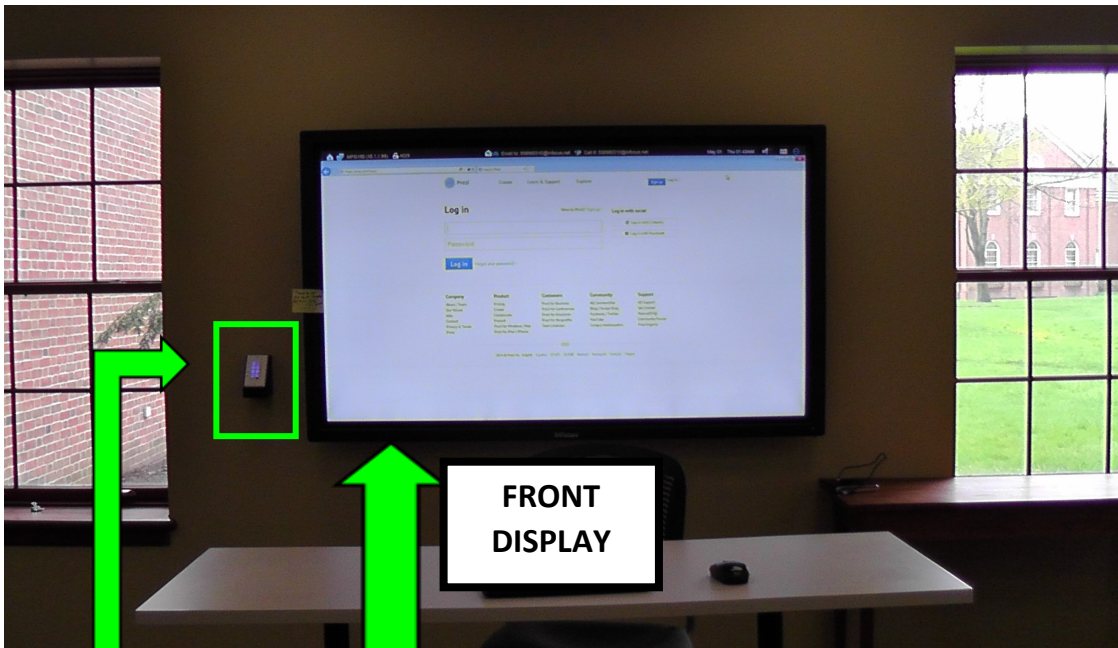


# G150 MONDOPAD GUIDE

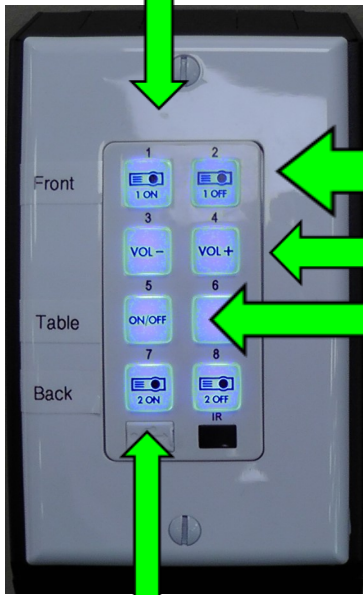


<b>TURNING ON SYSTEM</b>	<b>2</b>
<b>UPLOAD PRESENTATION FILE TO MONDOPAD</b>	<b>3 - 7</b>
<b>VIEW MONDOPAD ON DEVICE</b>	<b>8</b>
<b>CONTROL MONDOPAD FROM DEVICE</b>	<b>9 - 10</b>
<b>MONDOPAD WHITEBOARD</b>	<b>11 - 12</b>

**TURN ON ALL DISPLAYS (BACK OF ROOM/EACH TABLE)**



**FRONT  
DISPLAY**

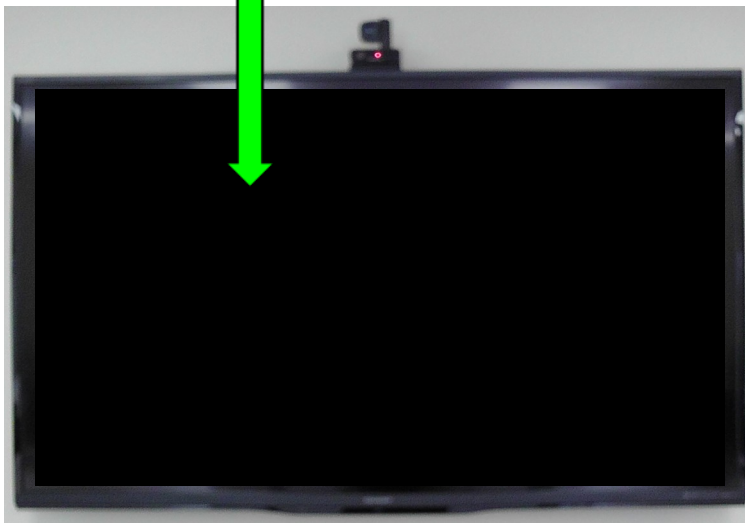


**MASTER  
VOLUME**

**BACK  
DISPLAY**



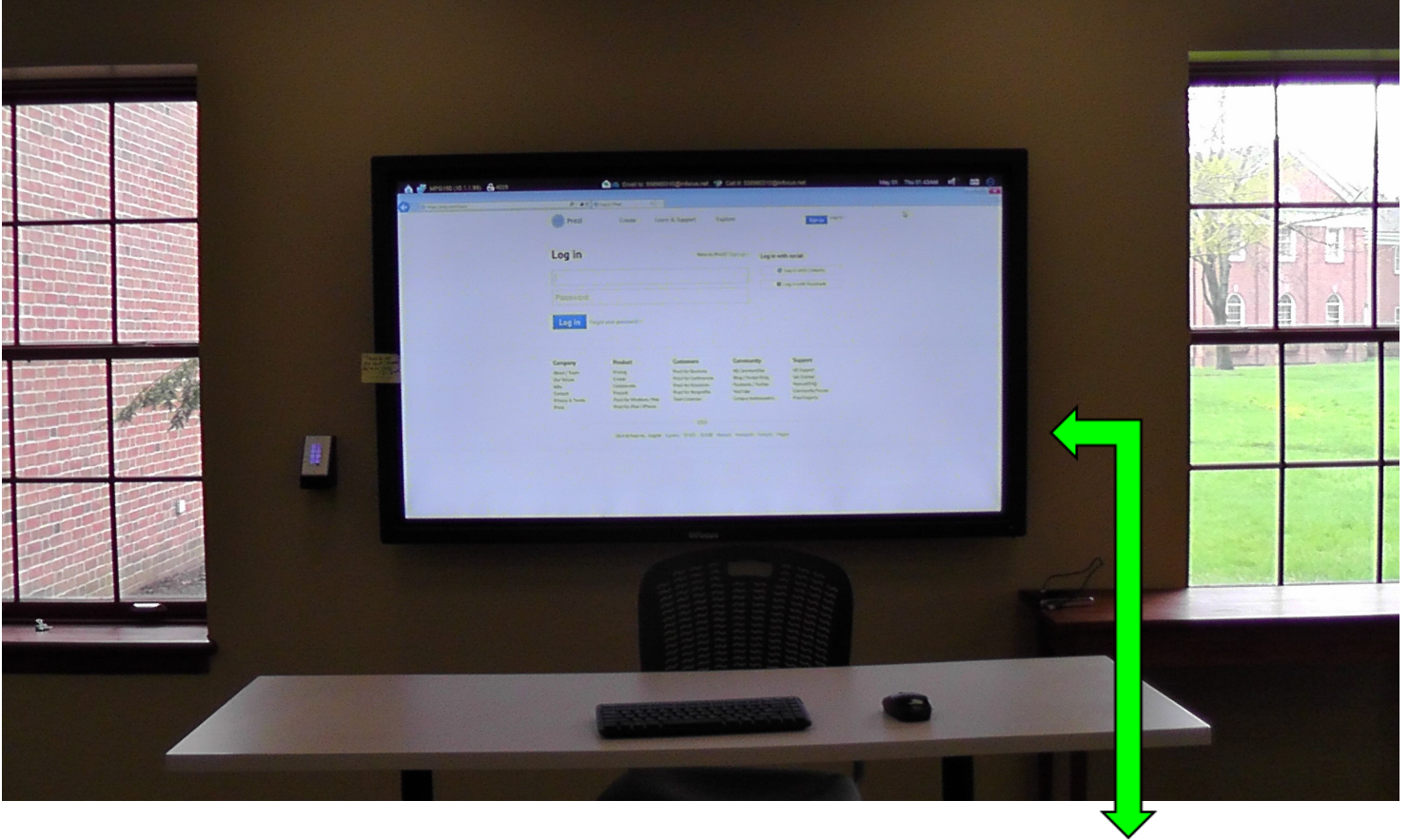
**TABLE  
DISPLAYS**



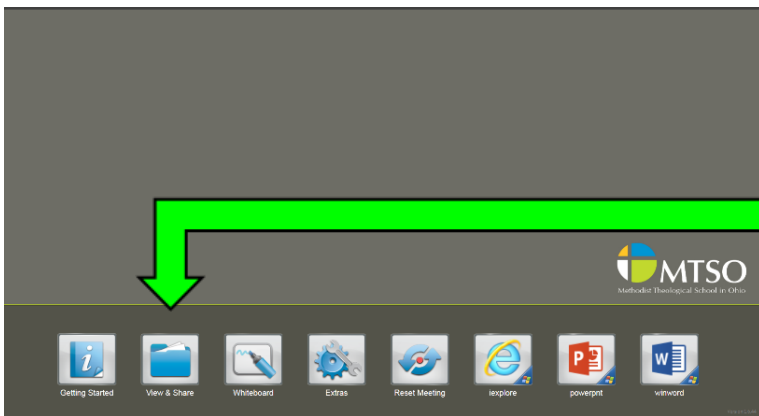
**\*THIS MONDOPAD IS NOT SET UP TO  
CONNECT A DEVICE VIA HDMI/VGA**



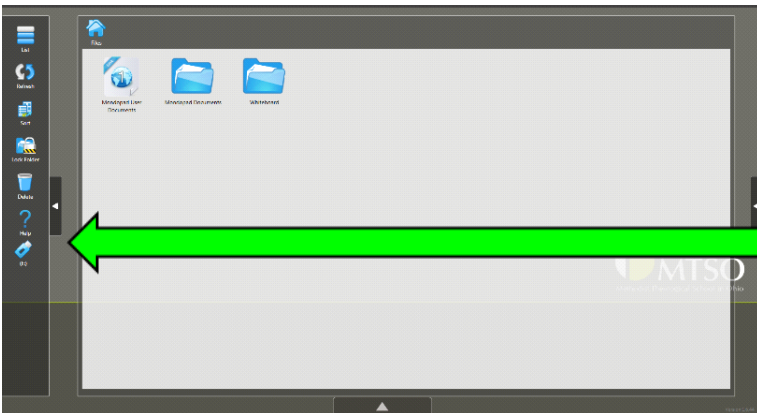
## VIEW FILE FROM DISK (THUMBDRIVE)



- **ATTACH THUMBDRIVE ON THE RIGHT SIDE OF THE SCREEN**

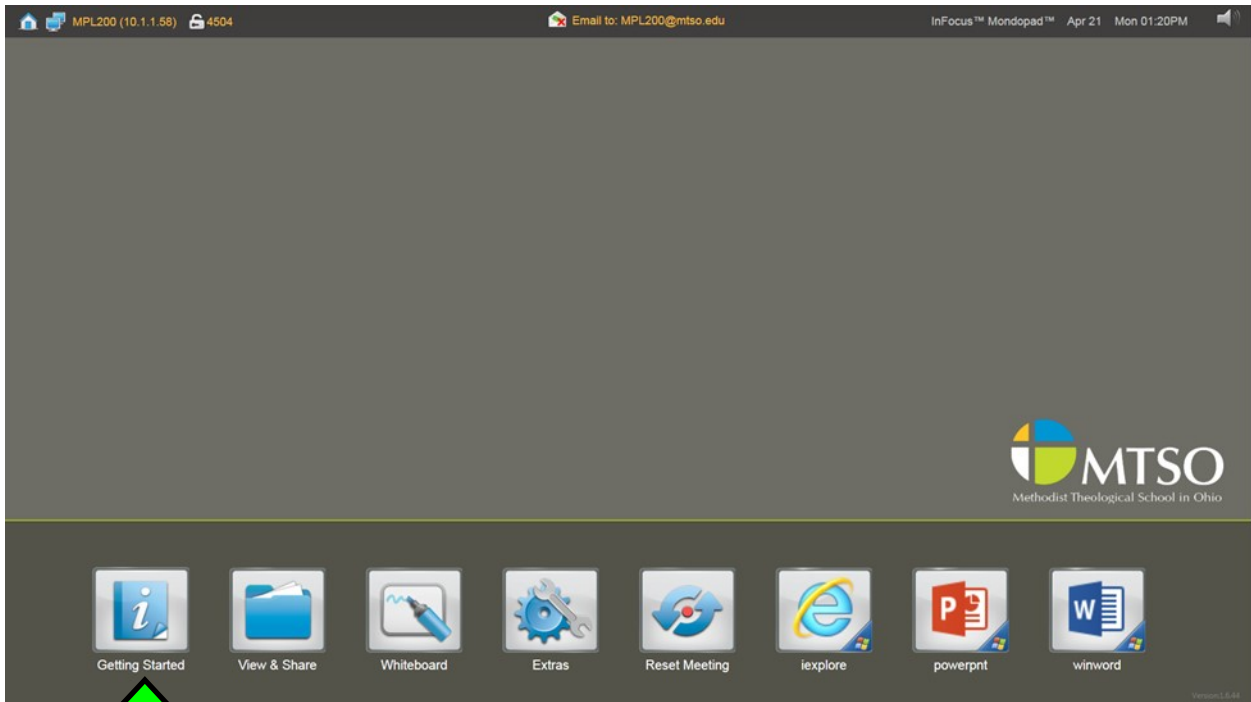


- **CLICK "View & Share" ON SCREEN**

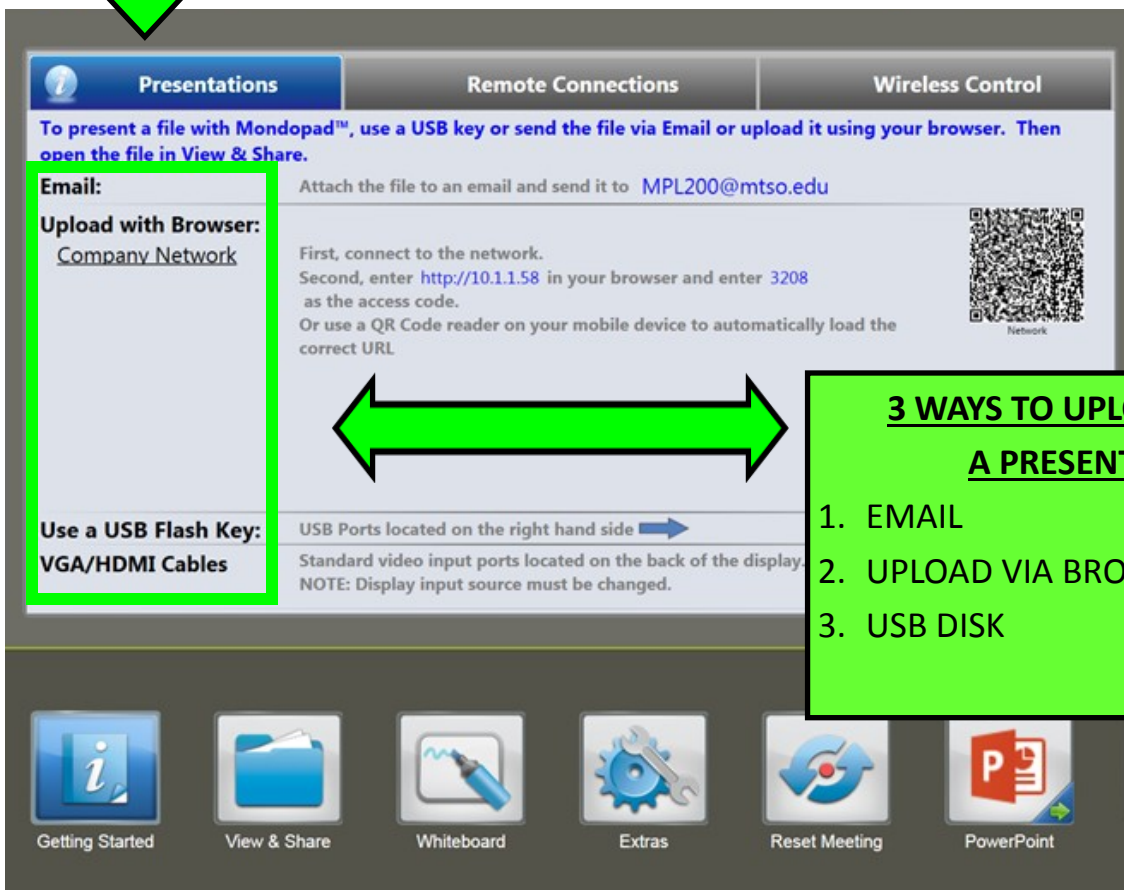


- **CLICK THE THUMBDRIVE ICON ON THE SCREEN TO ACCESS FILES**

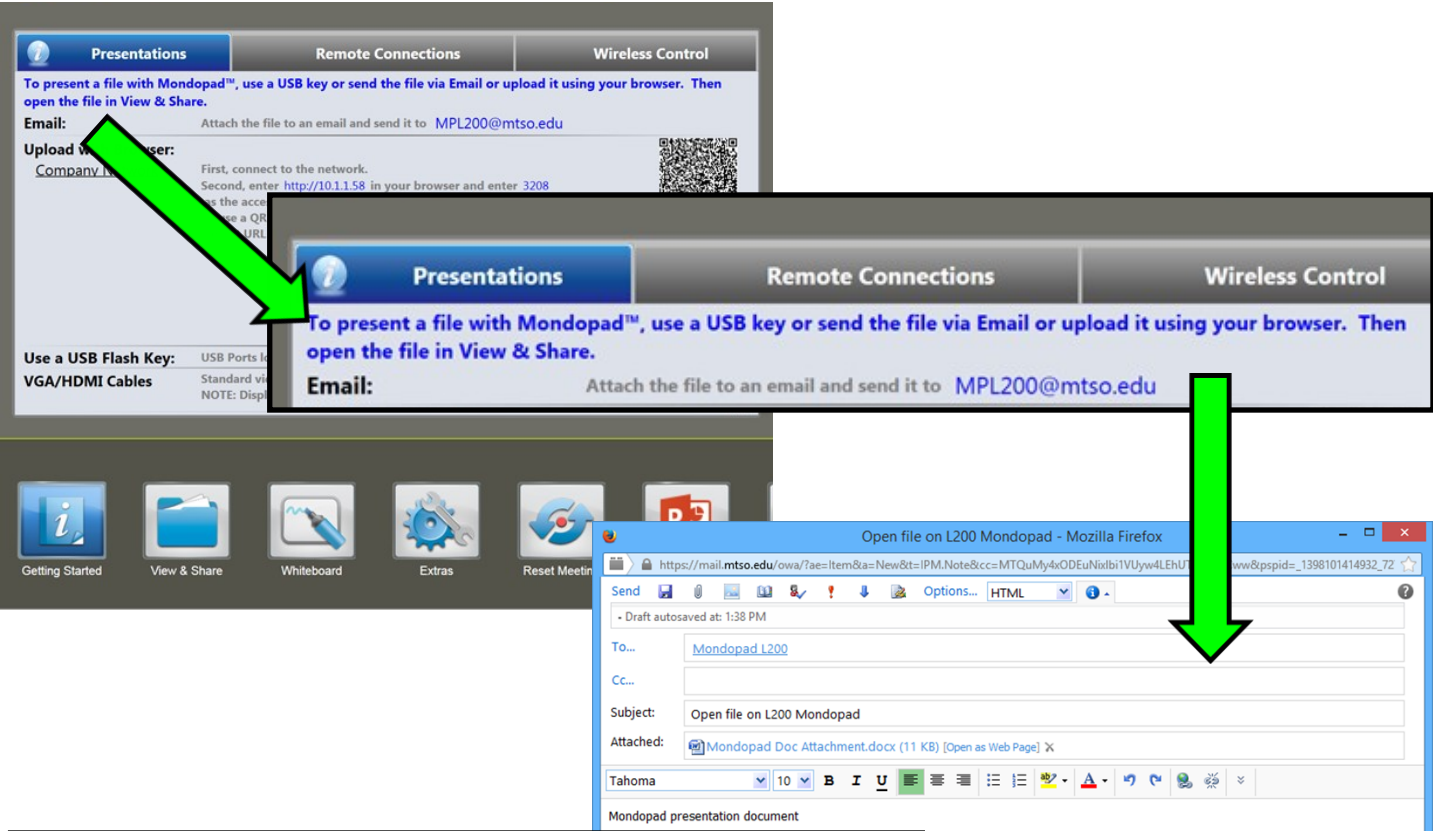
## UPLOAD PRESENTATION TO MONDOPAD



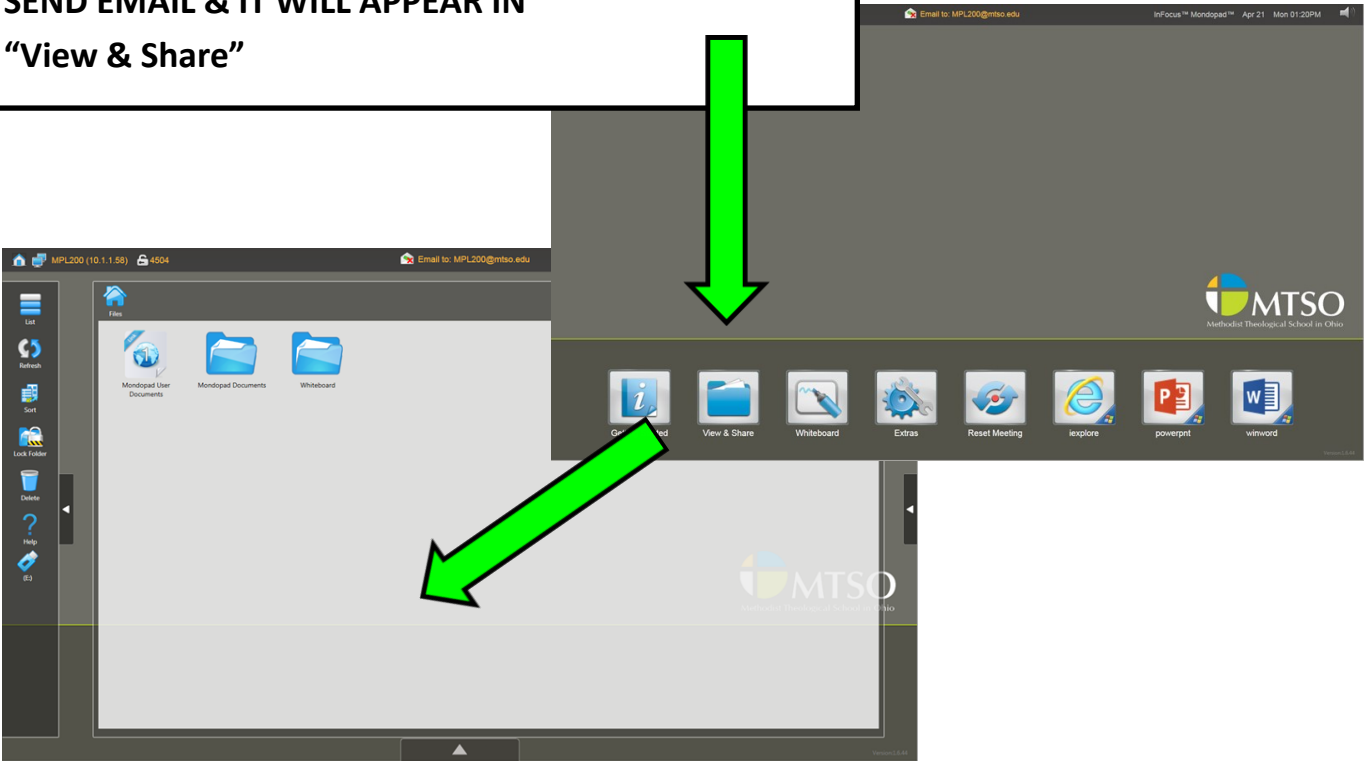
**CLICK "GETTING STARTED" ON THE MONDOPAD HOME SCREEN**



# EMAIL PRESENTATION TO MONDOPAD



- COMPOSE A NEW EMAIL WITH THE MONDOPAD EMAIL ADDRESS
- ATTACH THE PRESENTATION DOCUMENT TO THE EMAIL
- SEND EMAIL & IT WILL APPEAR IN "View & Share"

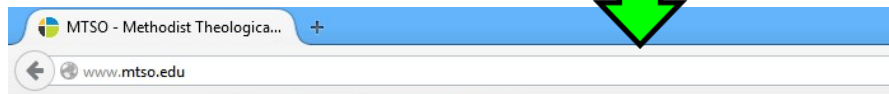




## UPLOAD PRESENTATION TO MONDOPAD (BROWSER)



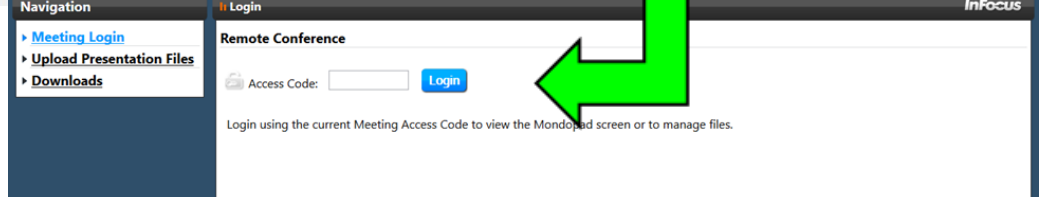
**CLICK "Getting Started"  
ON THE HOME SCREEN  
THEN CLICK THE "Presentations" TAB**



**TYPE IN THE <http://> LINK  
ADDRESS INTO YOUR DEVICE'S  
BROWSER**

**3208**

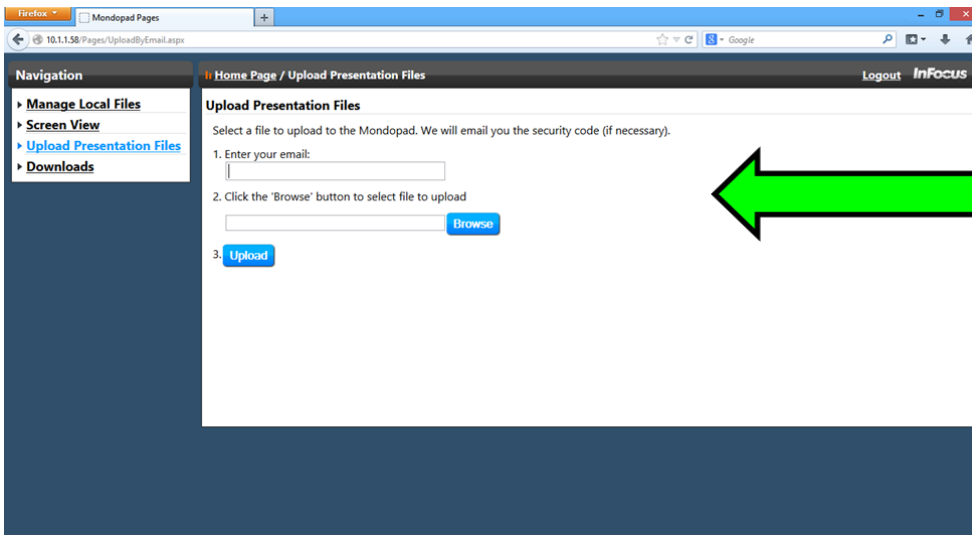
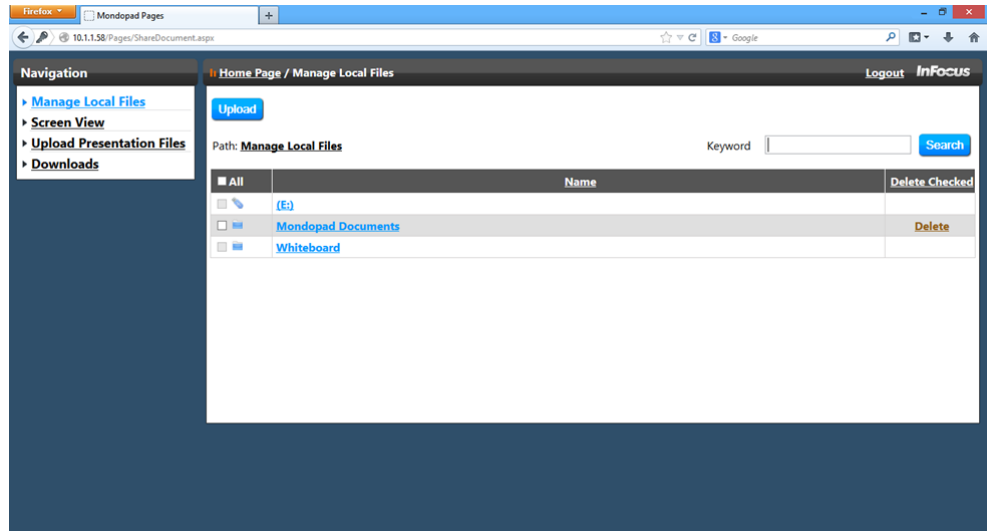
**ACCESS CODE**



**THE MEETING LOGIN PAGE WILL  
APPEAR ON YOUR BROWSER.  
ENTER THE CODE GIVEN IN THE INSTRUCTIONS.  
\*CODES WILL VARY**

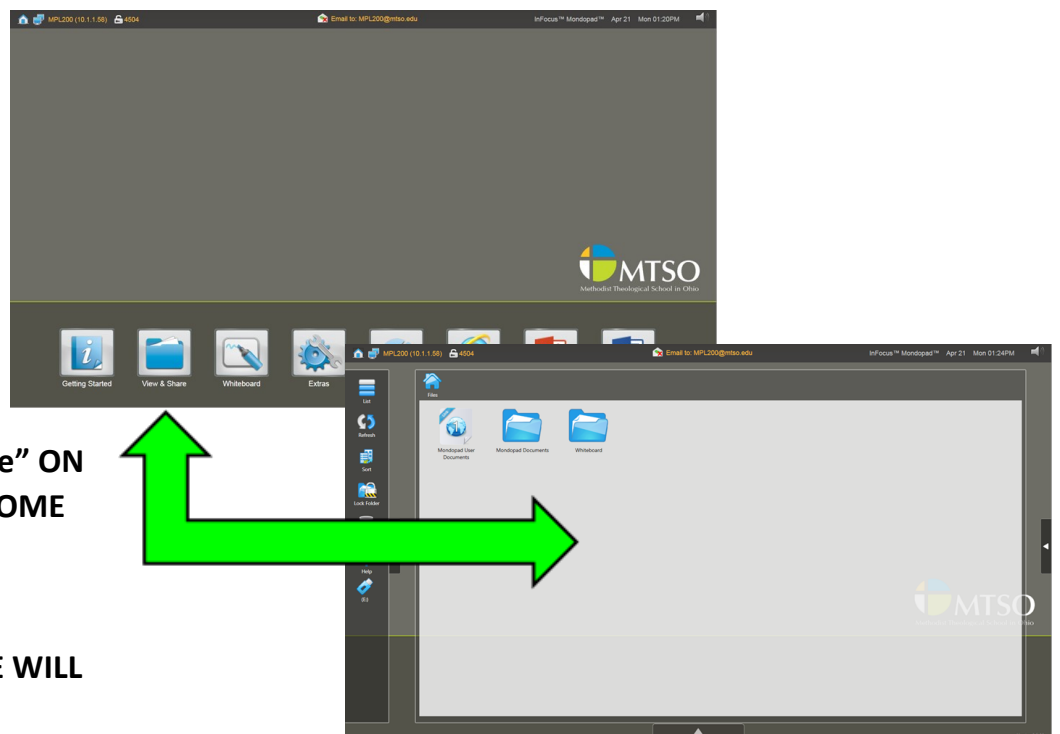
## UPLOAD PRESENTATION TO MONDOPAD (BROWSER, CONT.)

**CLICK**  
**“Upload Presentation Files”**

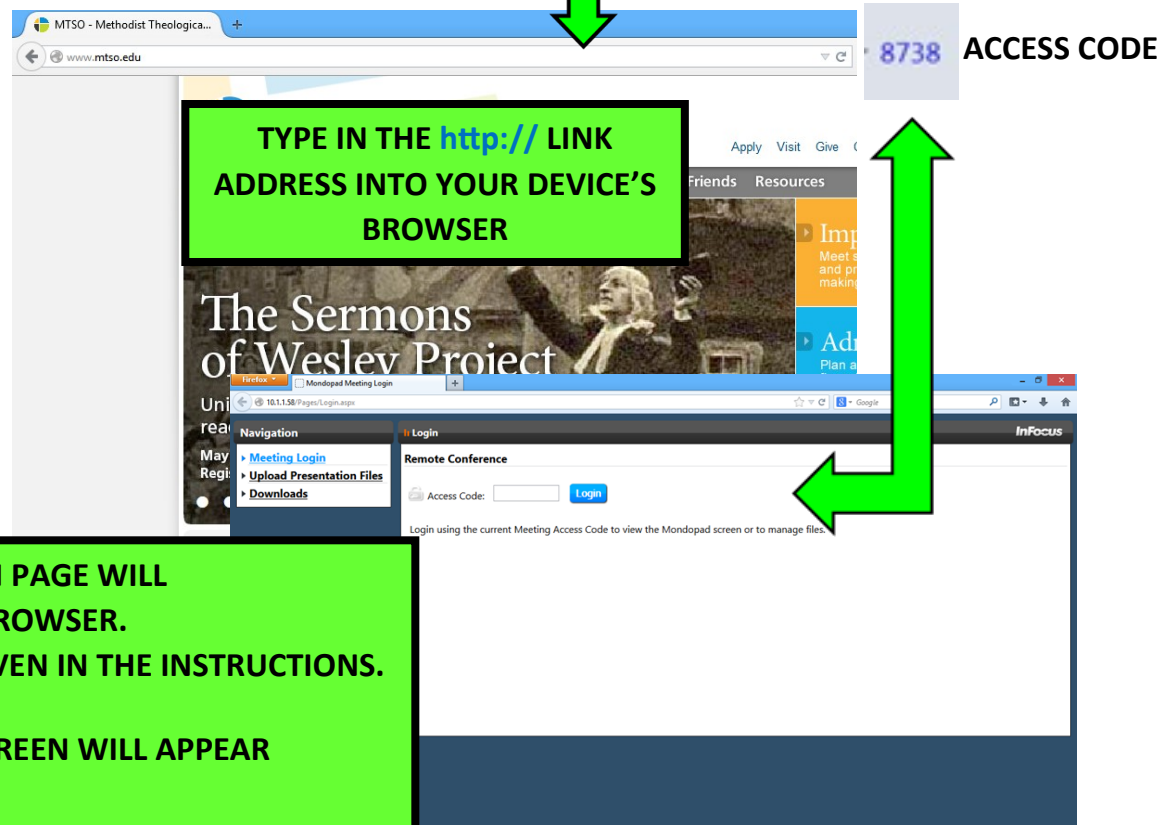
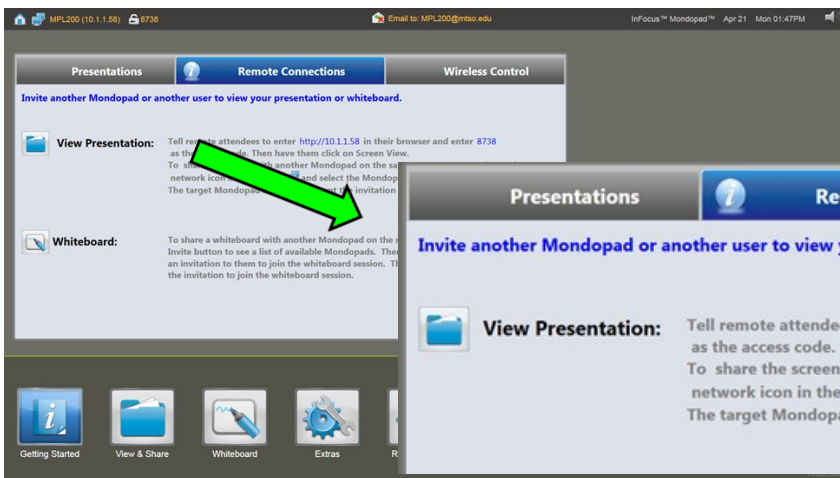


- ENTER YOUR EMAIL ADDRESS
- CLICK “BROWSE” TO UPLOAD THE PRESENTATION FILE

- CLICK “View & Share” ON THE MONDOPAD HOME SCREEN
- PRESENTATION FILE WILL BE AVAILABLE IN “Mondopad Documents”



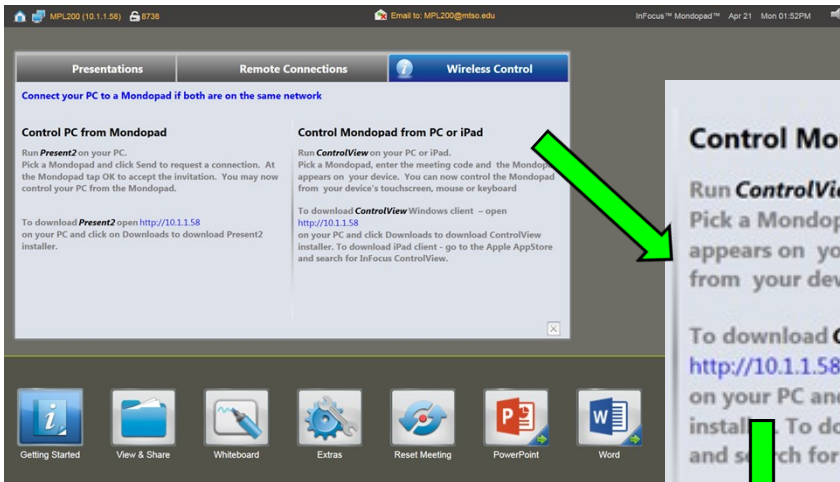
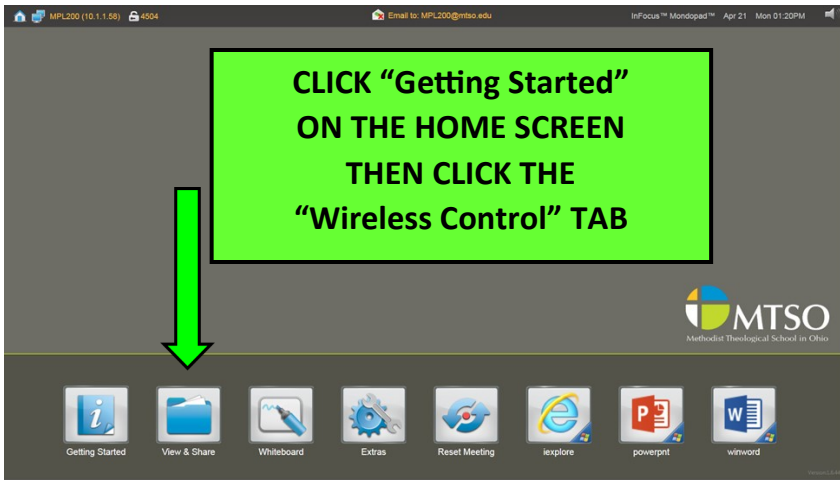
## VIEW MONDOPAD PRESENTATION ON DEVICE (REMOTE CONN.)



- THE MEETING LOGIN PAGE WILL APPEAR ON YOUR BROWSER.
- ENTER THE CODE GIVEN IN THE INSTRUCTIONS.  
\*CODES WILL VARY
- THE MONDOPAD SCREEN WILL APPEAR ON YOUR DEVICE



# CONTROL MONDOPAD FROM PC/MAC

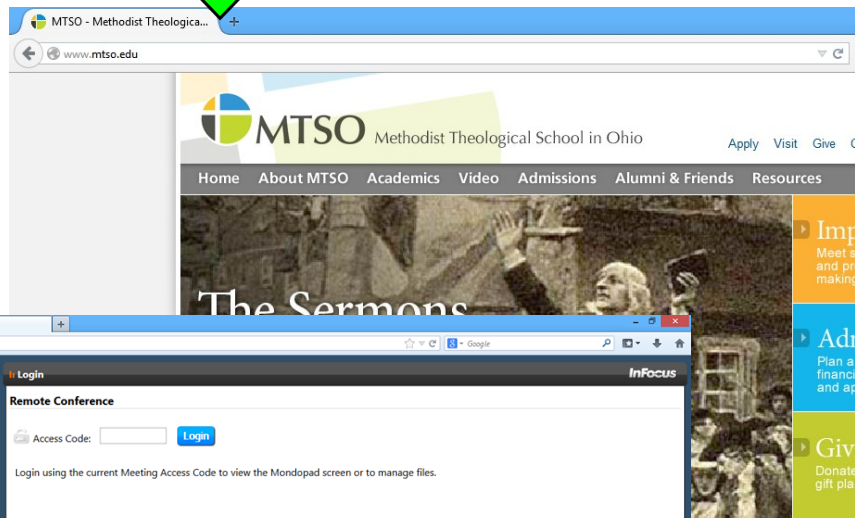


**Control Mondopad from PC or iPad**

Run **ControlView** on your PC or iPad. Pick a Mondopad, enter the meeting code and the Mondopad appears on your device. You can now control the Mondopad from your device's touchscreen, mouse or keyboard

To download **ControlView** Windows client - open <http://10.1.1.58> on your PC and click Downloads to download ControlView installer. To download iPad client - go to the Apple AppStore and search for InFocus ControlView.

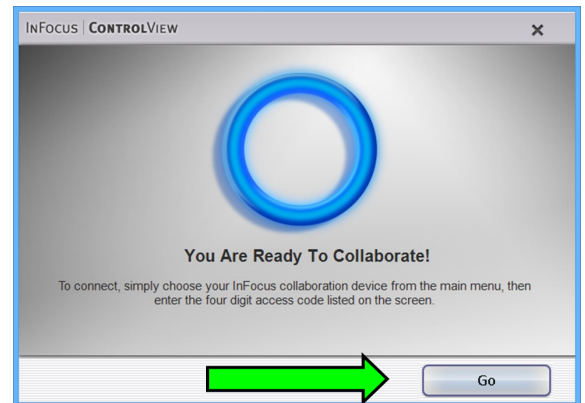
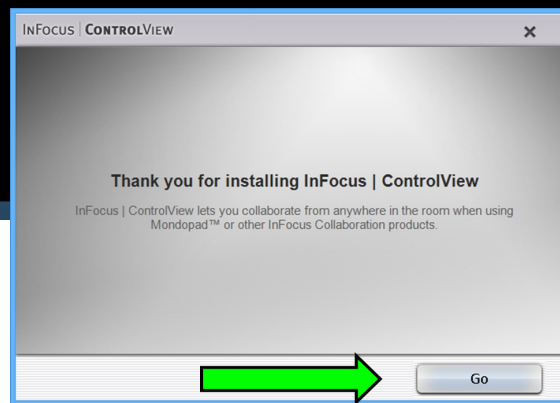
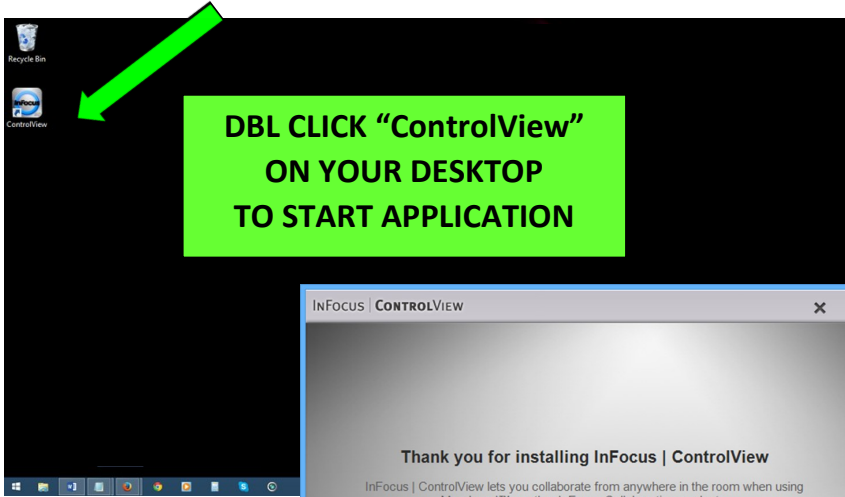
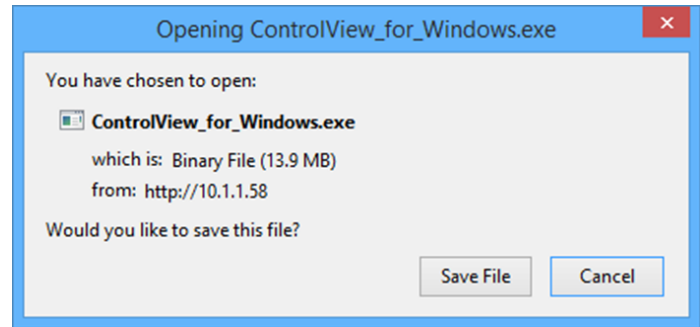
TYPE IN THE <http://> LINK ADDRESS INTO YOUR DEVICE'S BROWSER



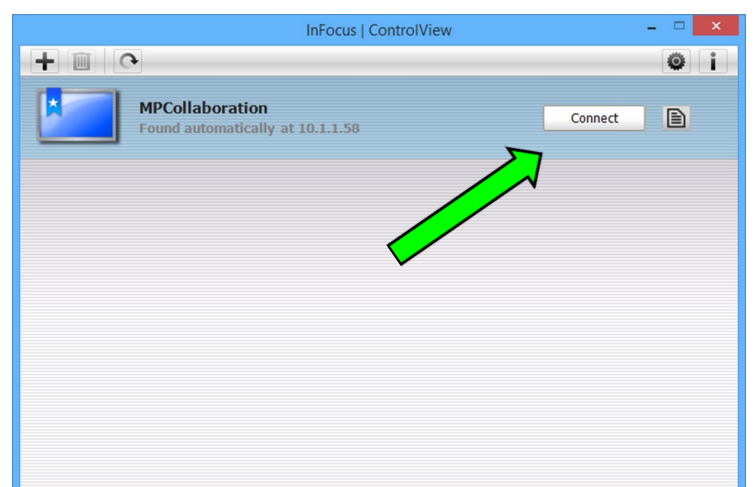
CLICK "Downloads"  
TO ACCESS THE  
"ControlView" FILE

## CONTROL MONDOPAD FROM PC/MAC (CONT.)

- **DOWNLOAD “ControlView”**
- **SAVE FILE**
- **ONCE DOWNLOADED INSTALL THE APPLICATION BY DBL-CLICKING THE SAVED FILE**
- **THERE WILL BE A SHORTCUT PLACED ON YOUR DESKTOP**

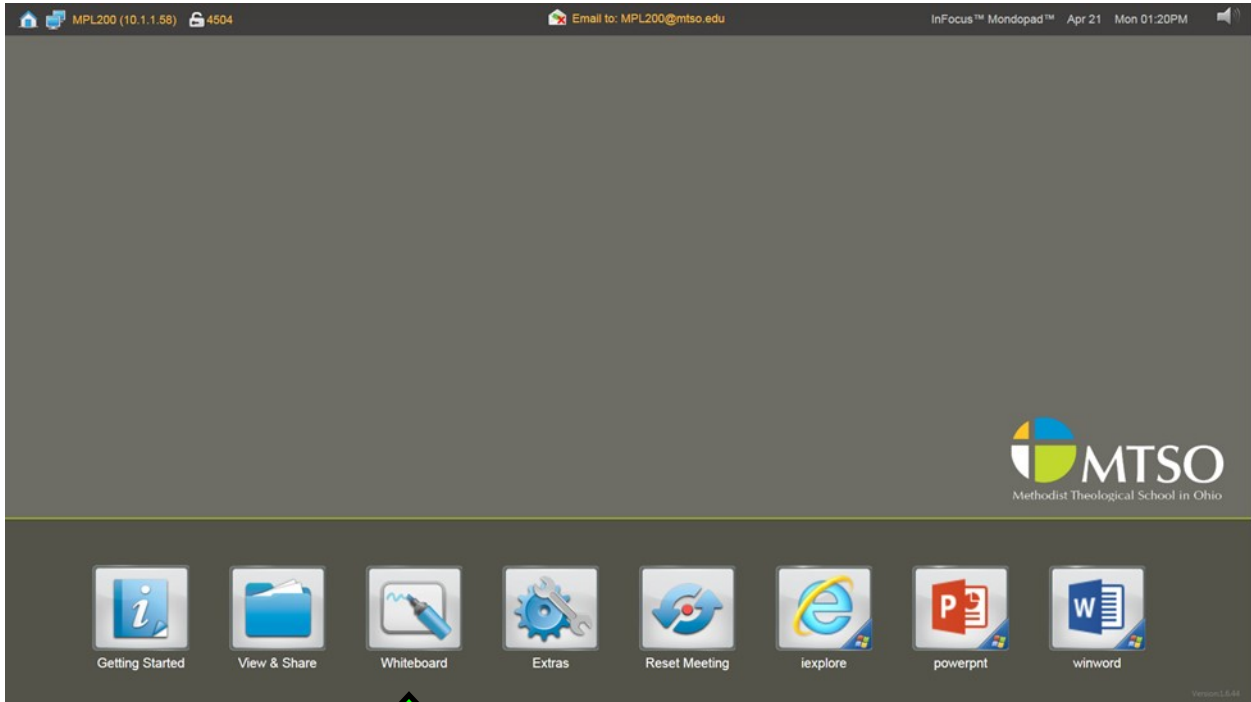


**CLICK “GO” TO START THE CONNECTION**

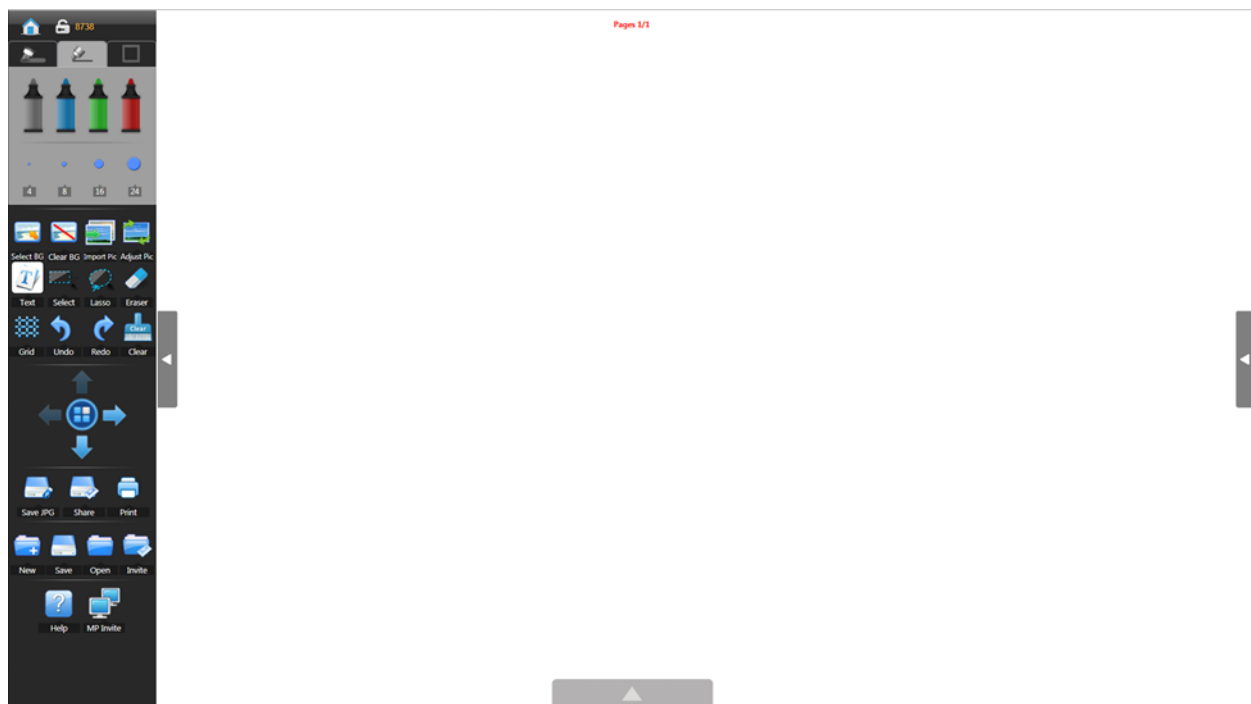


**CLICK “ALLOW ACCESS” & THEN “CONNECT”  
THE MONDOPAD SCREEN WILL THEN APPEAR ON YOUR DEVICE**

# MONDOPAD WHITEBOARD



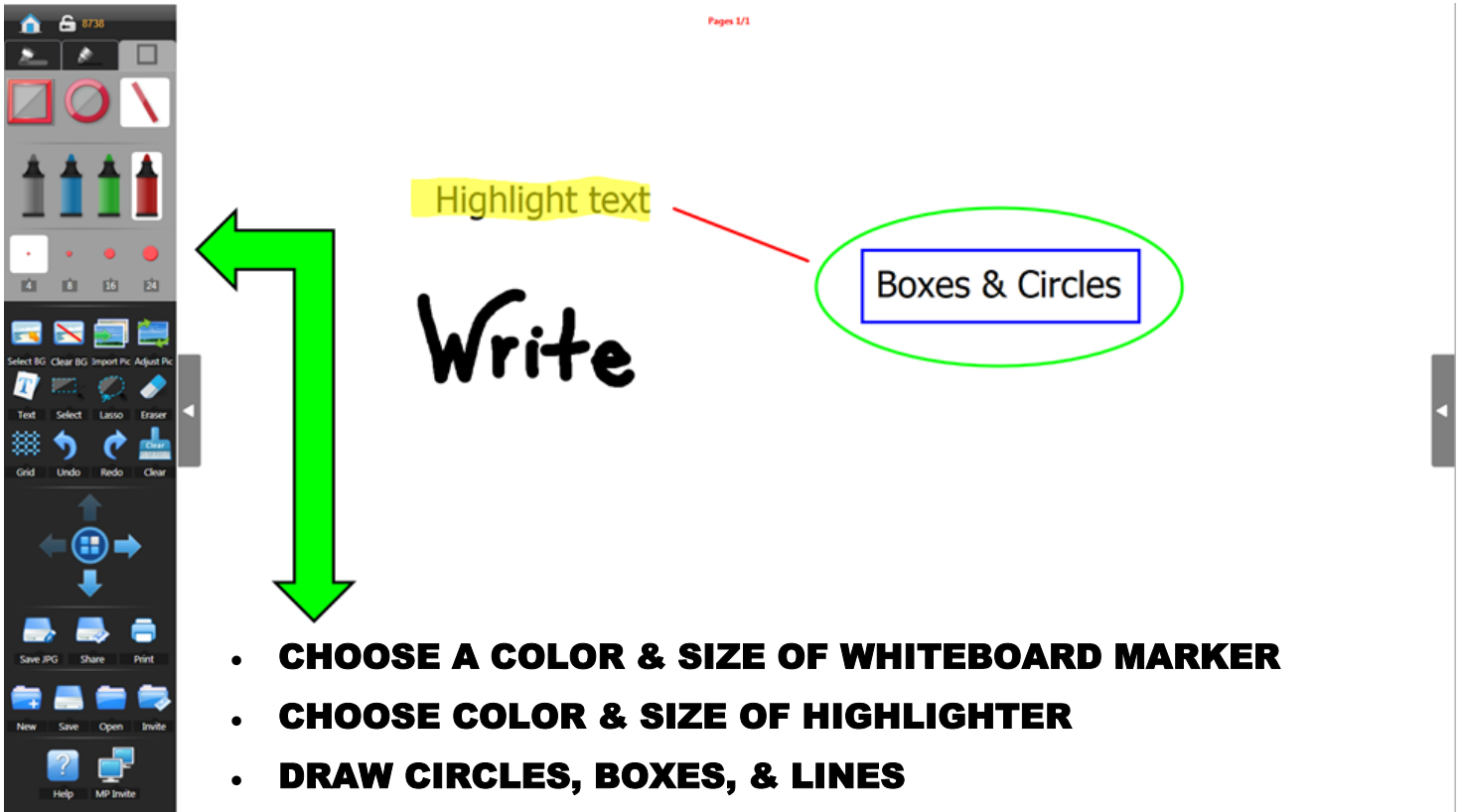
**CLICK "WHITEBOARD" ON  
THE MONDOPAD HOME SCREEN**





## MONDOPAD WHITEBOARD (CONT.)

**WRITE WITH YOUR FINGER/STYLUS ON THE WHITEBOARD  
OR TYPE USING THE KEYBOARD**



- **CHOOSE A COLOR & SIZE OF WHITEBOARD MARKER**
- **CHOOSE COLOR & SIZE OF HIGHLIGHTER**
- **DRAW CIRCLES, BOXES, & LINES**
- **UNDO, ERASE, OR CLEAR WHITEBOARD**
- **UPLOAD IMAGES AS BACKGROUND OR FOR DISPLAY**