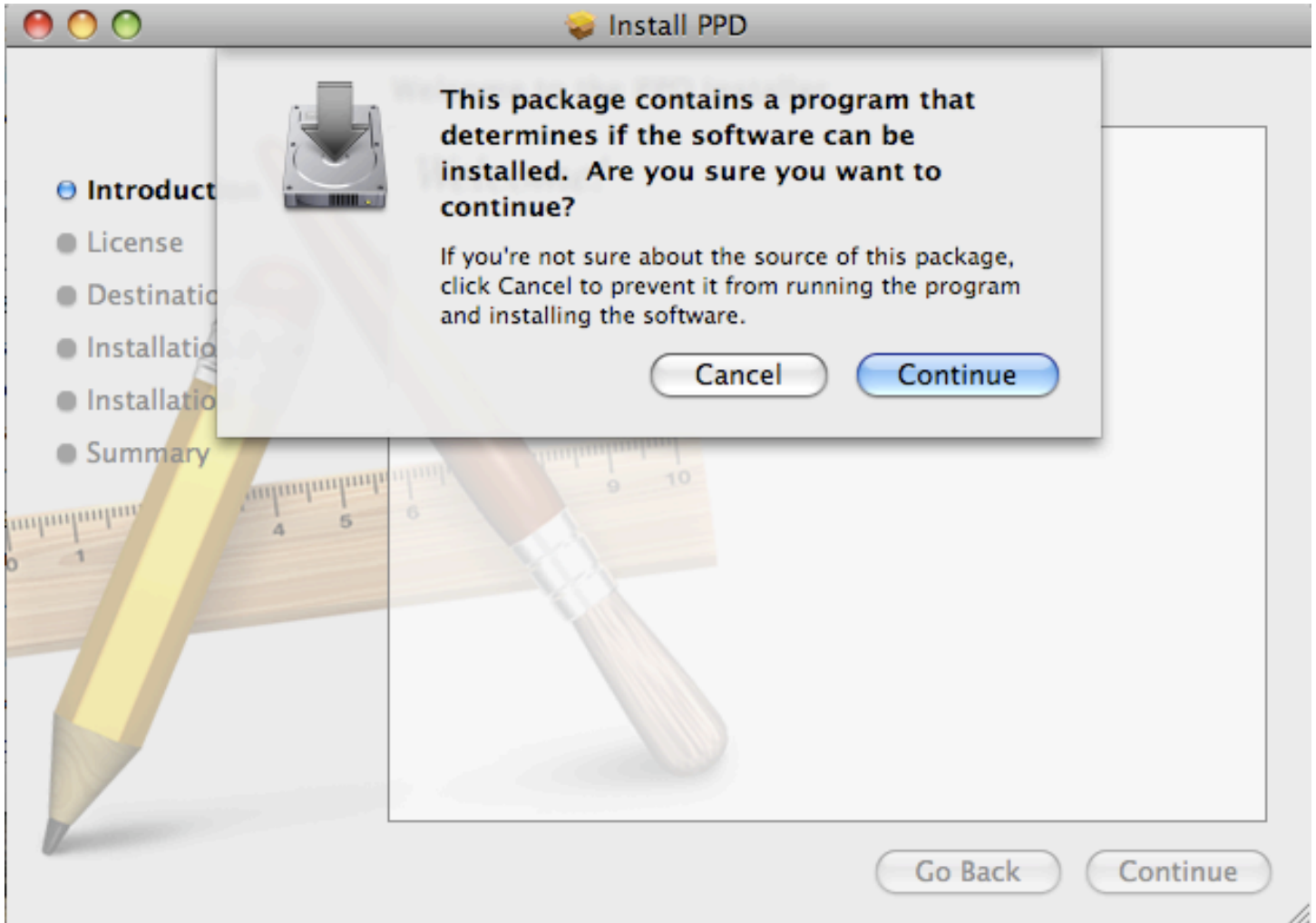
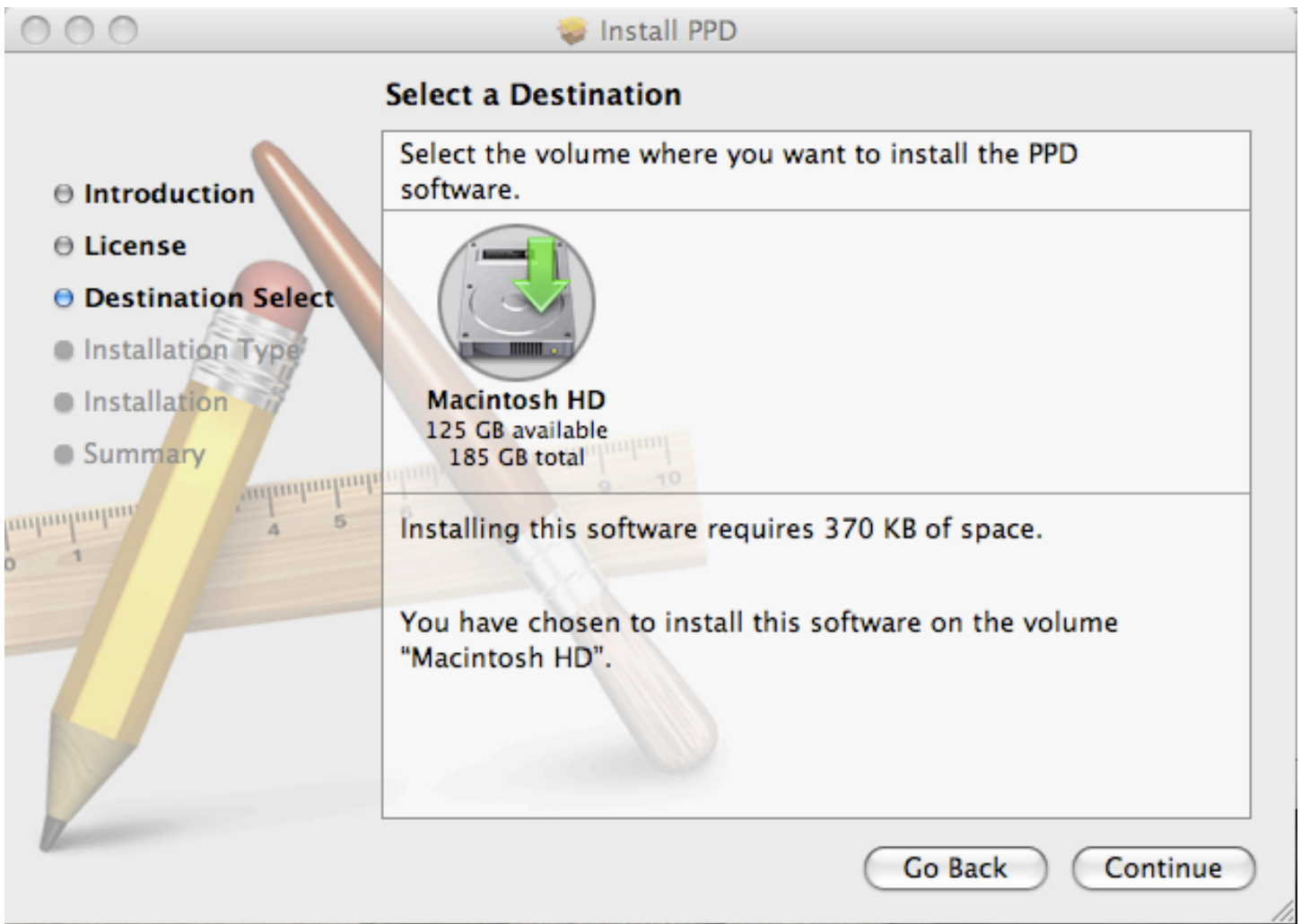


Install MTSO Library Ricoh Printer – Mac OS X

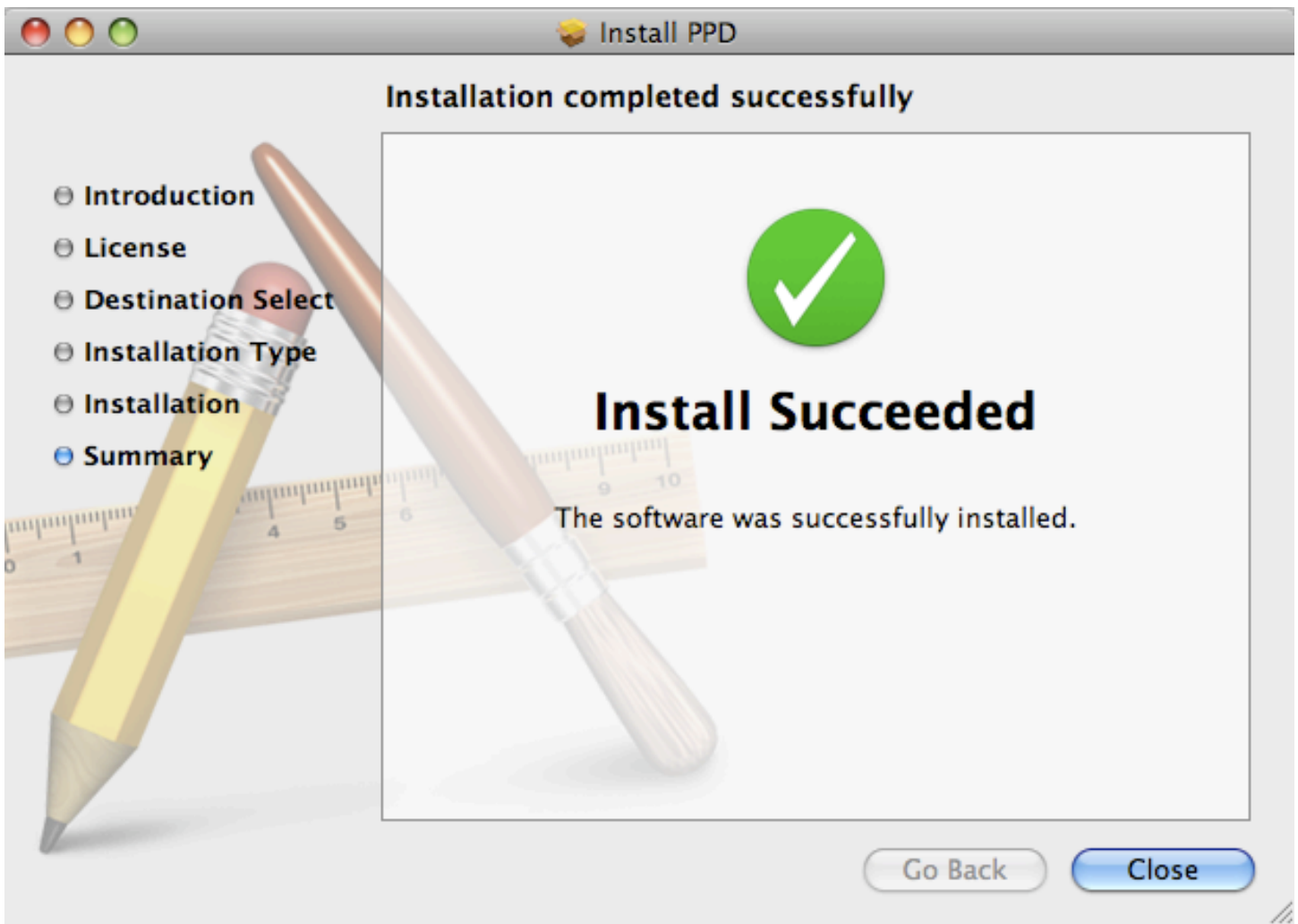
1. Download the Ricoh printer driver for MAC <http://www.mtso.edu/downloads/r28294L9.dmg.zip> to the desktop. When download is complete, click the file.
2. Click Continue when you are prompted.



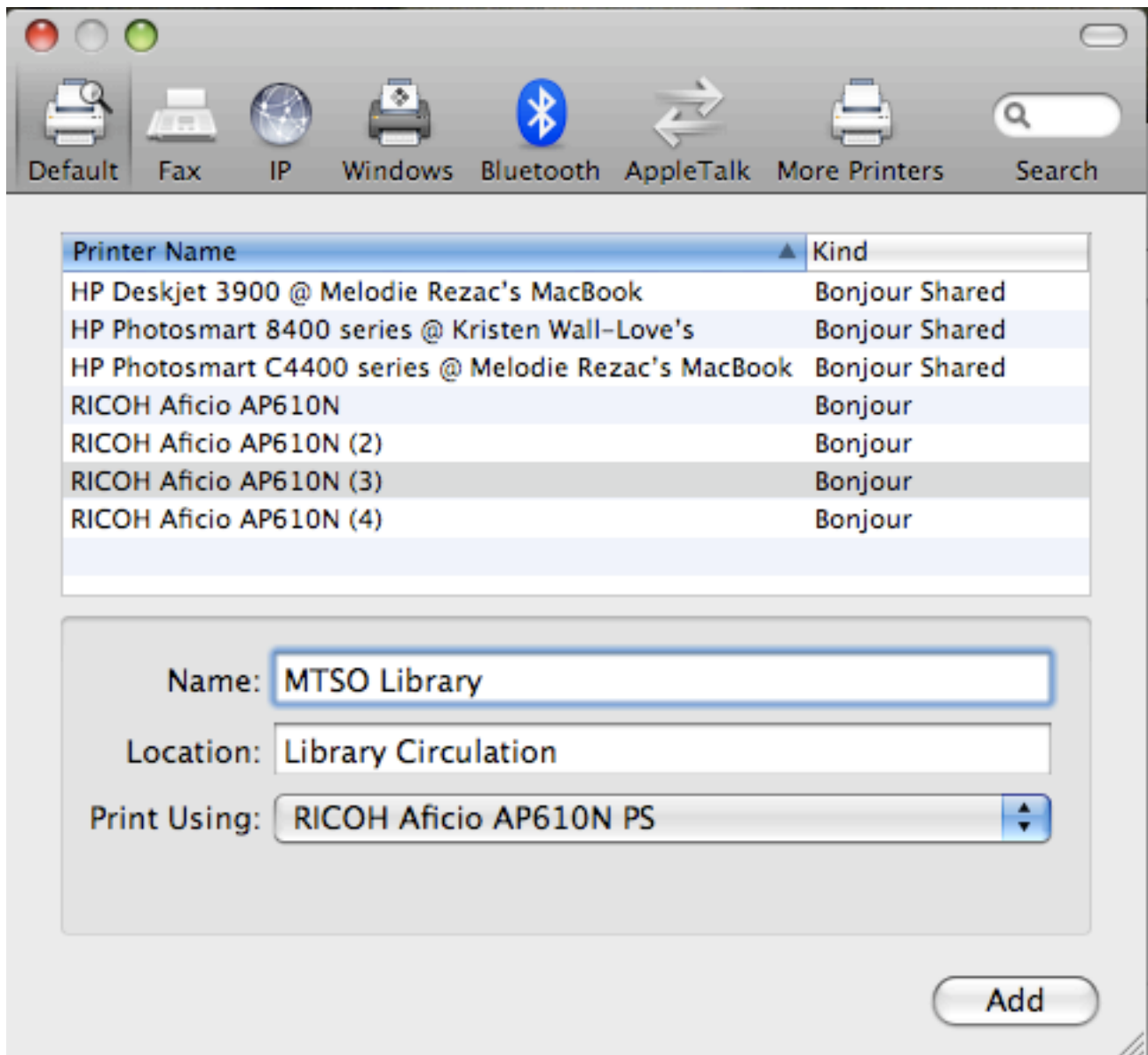
3. Click Continue when prompted the second time.
4. Read software license agreement and click continue and agree when prompted.
5. Select hard drive to install software and click continue.



6. Click install on standard install screen. [Enter your Mac user password if prompted.]
7. Click close once install completes.



8. Open system preferences and select print & fax.
9. Click the plus [+] button
10. Select Ricoh Aficio AP610 (3), Enter MTSO Library (or other descriptive name) and click add.



11. Once the printer setup is complete, you can print to the printer behind the circulation desk when using the MTSO network.